



Important Information for School Reopening – Primary Phase

School will be open for all pupils on Monday 8th March 2021

It is compulsory for all pupils to be back in school.

Dear Families,

We hope that you and your loved ones are safe and well. We are looking forward to welcoming our pupils back to school from Monday 8th March. Please do take some time to look over the important information below.

If you have any further queries, please do get in touch via email at Enquiries.NSWL@nishkamschools.org.

Arrival & Departure

In order to facilitate safe distancing during entry/exit to school, we will be continuing with the soft start of the day for all year groups so that pupils can be dropped off without parents having to wait outside classrooms. There will also be a staggered end of the day time in order to minimise pedestrian traffic:

Year Group	Start of day	Classroom doors open for soft start	End of day
Reception	8.30am	8.20am	Soft end of day starts 2.55pm
Year 1	8.20am	8.00am	3.00pm
Year 2	8.20am	8.00am	3.00pm
Year 3	8.20am	8.00am	3.10pm
Year 4	8.20am	8.00am	3.10pm
Year 5	8.20am	8.00am	3.10pm
Year 6	8.20am	8.00am	3.10pm

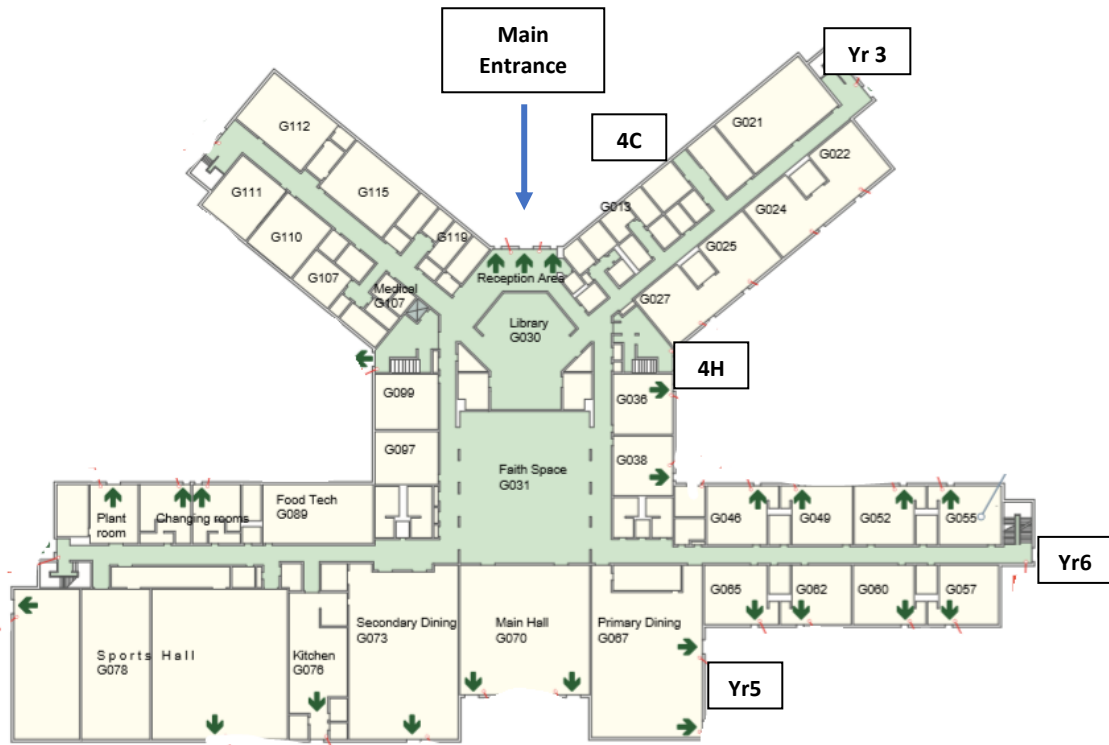
-Please ensure that there is only one adult bringing the pupil to school in order to minimise numbers of people coming onto the school site. Where possible, please try to leave other non-school aged children at home but we understand if this is not always possible.

-We will continue to be operate a one-way system for the Syon Lane entrance where families will walk in on the pathway to the left and out through walking down the driveway. The Wood Lane entrance will be open, and the path will be split into two parts to indicate a one-way system.

-Reception & KS1 pupils will enter classrooms through their classroom doors. KS2 pupils will enter through the usual doors that they have been using. However, **exits continue to be different:**

- Year 3 will exit from the usual doors on the right as you enter the green gates & will be lined up inside/outside.
- 4 Contentment will exit from the door near the main entrance on the side.
- 4 Humility will exit from the usual Year 4 door near the reception classrooms.
- Year 5 will exit from the Primary dining hall doors
- Year 6 will exit from usual doors near KS1 classrooms & will be lined up outside

Please see map on next page for further information.



-All entry and exits points will be clearly marked out.

-Please note that parents will not be able to communicate directly with staff during these times and will be expected to observe the 2m distancing rule. There will be no entry to the school office either with all queries being communicated via email or calls.

-Please note that there will be no parking for parents onsite regardless of any medical issues. Only pupils with a disabled badge will be permitted into the school car park. Please do not request any parking as this takes up unnecessary administrative time.

How will pupils be grouped?

All pupils will stay in their class bubbles throughout the day. The group will maintain social distancing from all other groups.

What about breaktimes?

Pupils will remain in their class bubbles at breaktime and will be allocated to zones in the playground so that they do not mix with other groups.

What are uniform expectations?

As we settle back into our routines, we are asking pupils to wear full uniform but not to wear ties or blazers for the rest of the half term. We will keep this under review.

What about PE kit?

For now, all pupils will come into school with their PE kits on the day that they have PE. This includes Reception pupils too.

What are the arrangements for lunch?

Reception and KS2 pupils will use the dining hall space for their lunch. Pupils will remain in their bubbles and will be allocated to seats. KS1 pupils will continue to have lunch in their classrooms. The usual procedure to book school lunches via ParentPay or sending in a vegetarian packed lunch will apply. Please book your child's lunch option (if not booked, they will only be given the cold option).

What equipment can be brought in?

We would like pupils to minimise the amount of equipment brought into school. Pupils can only bring a water bottle, red book bag and packed lunch. In KS2, pupils can bring in a sensible pencil case with writing pencils, rubber, ruler, pencil sharpener & colouring pencils. Any additional items will be sent home. Rucksacks are discouraged unless there is an important reason for bringing one in.

What is happening with the extended day provision?

We are in a position to reopen our breakfast and aftercare clubs so please email for further information at Enquiries.NSWL@nishkamschools.org. There will be more updates on clubs to follow.

Will the curriculum be changing?

We are planning to deliver a broad and balanced curriculum with time built in to target gaps caused by school closure. There will be interventions in place to further support pupils with this recovery work. We look forward to receiving support and co-operation from parents in helping us to close these gaps swiftly.

What will happen if I do not send my child in?

There is a legal duty for all parents to send their child to school. Normal attendance monitoring protocols will be in place and you may be referred to the Education Welfare Officer if an absence trigger is reached. This could lead to families being fined in the worst-case scenario. Please report all absences via the online form <https://tinyurl.com/4dmmymcb>

Will the school bus service be running?

The service will be resuming. Please contact Bharat coaches for booking information.

What if I am late for school?

We strongly urge you to ensure that you arrive on time for the start of the day. We are hoping that the soft start to the day will support parents with dropping off multiple children. We will not be able to let pupils that arrive late back in through the entry doors, so parents will have to go to the main entrance and await further instructions.

Late arrival will be carefully monitored and may result in a referral to the Education Welfare Officer if the issue persists.

What if I am late for collection?

We strongly urge you to ensure that you arrive on time for the end of the day as being collected late is very worrying for pupils. If you arrive later than 10 minutes from the end of the day, your child will be taken to the front office. Late collection will be tracked, and you will be charged an aftercare rate if you are late on more than 3 occasions.

What if my child is self-isolating & unable to attend school?

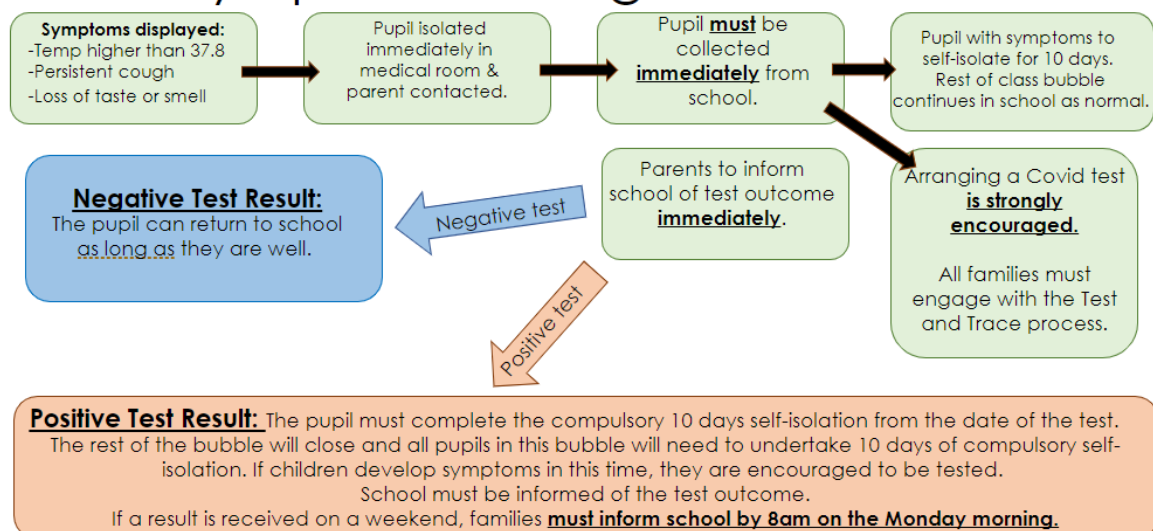
If your child is self-isolating, their education will switch back to an online platform and tasks will be set via Show My Homework.

What if my child is ill or injures themselves?

If a pupil injures themselves, staff will deal with this as they normally do and will follow first aid protocols. Gloves and mask will be used to administer first aid as the 2m social distance will not be able to be kept.

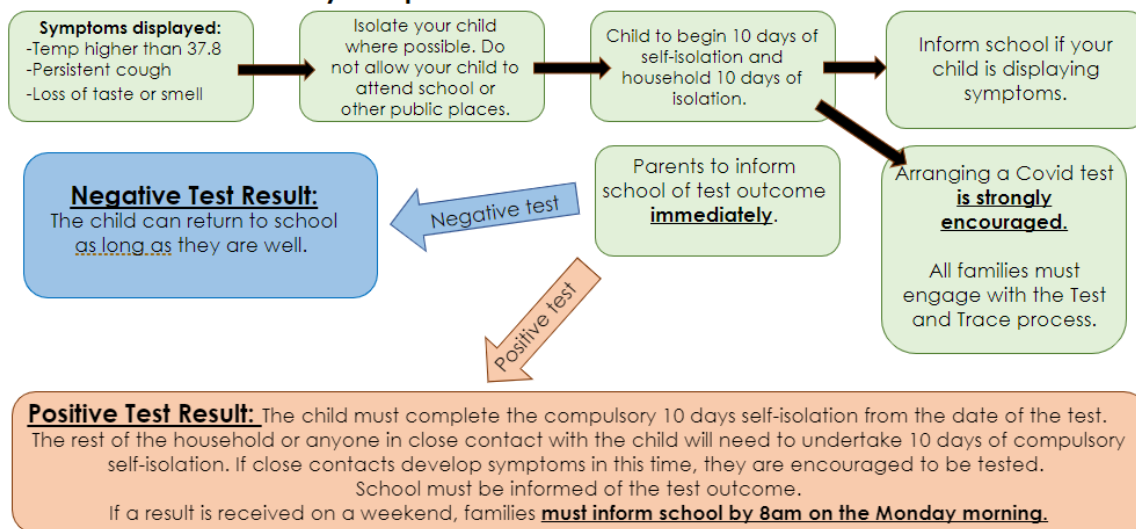
What if my child displays symptoms during the school day?

School response if a pupil displays symptoms during school time



What if my child displays symptoms at home

What if my child displays symptoms at home?



Please do note that this information will be continually reviewed and is subject to change in line with any further government guidance updates.

Kind regards,

S. Rai

Mrs S. Rai

Head of Primary