



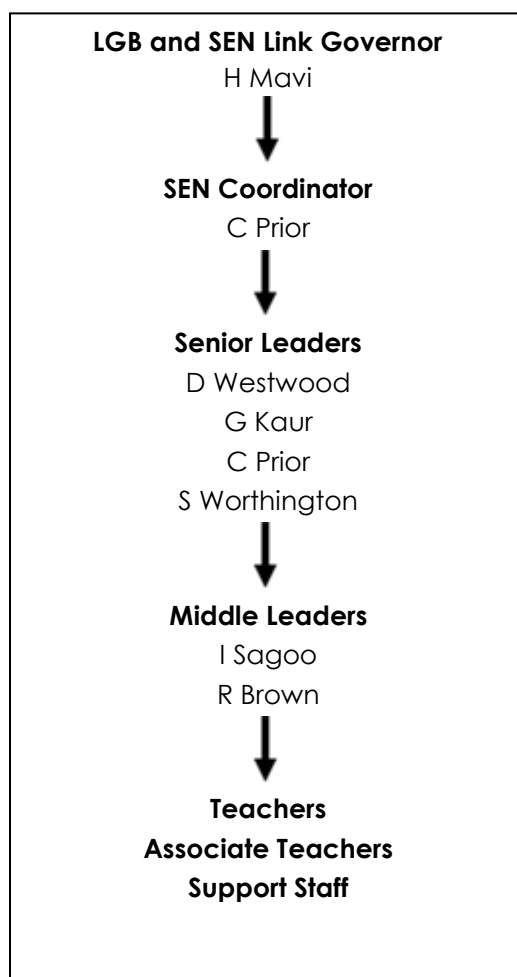
SEND INFORMATION REPORT 2020 – 21

Nishkam Primary School is a multi-faith, free school with a Sikh ethos. We welcome pupils of all faiths and none. We believe in the inclusion of all pupils regardless of their religion, ethnic background or level of ability. Our model is built on family values and the 24 dispositions (e.g. compassion, forgiveness, humility, truth) developed by Birmingham SACRE.

We believe that every pupil, regardless of their academic ability, has the potential to succeed. We strive to develop their talents and help them to become thoughtful, caring individuals who will make a positive contribution in society.

The Primary School was set up in September 2011 and is a young school under development. The SEND department has evolved over time. The type and range of provision will be extended year on year.

The School SEND Structure



The types of SEND we support are:

i. Cognition and Learning

How your child thinks, learns and understands their world.

ii. Communication and Interaction

How your child talks to, listens, responds, interacts with and learns from other children and adults.

iii. Social, Emotional and Mental Health difficulties

How your child shows their feelings, negotiates and solves problems in different situations and handles changes of routine.

iv. Sensory and/or Physical needs

How your child responds to their environment and learning using their senses and any diagnosed medical issues.

Three waves of intervention

Our SEND provision is based on three types of intervention:

Wave 1: is inclusive Quality First Teaching (QFT) for all pupils, with differentiation as appropriate.

Wave 2: is for those pupils who are working **just below** age-related expectations. It includes interventions which are designed to increase rates of progress in order to enable pupils to catch up or get them back on track to meet expectations. Wave 2 interventions should be available to any pupil, not just SEN pupils.

Wave 3: is for those pupils who are working **significantly below** age-related expectations, many of whom will have identified learning difficulties. It aims to accelerate and maximise progress, addressing barriers to learning and minimising gaps in performance. Pupils at Wave 3 may have particular needs related specifically to numeracy or literacy, or needs associated with other barriers to their learning. Provision at this level is likely, but not always, to involve specialist support.

We currently offer the following for pupils with SEND:

- Wave 1: Quality First Teaching
- Wave 2: Small group targeted intervention
- Wave 3 interventions
- Individual targeted interventions

Frequently Asked Questions

Q: What should I do if I think my child has particular education needs?

Contact the school SENDCo to arrange a meeting to:

- ✦ Tell us about your child
- ✦ Share and discuss your concerns

Q: How will Nishkam School know if my child has special education needs (SEND)?

- Information from their nursery school or previous setting & any external agencies already involved
- Assessments within the first term of entry
- Teacher observations
- Teacher meeting parents to discuss observations and plan joint additional support/intervention (SENDCO to be informally involved)
- Additional diagnostic screening
- SENDCO to meet with parents & teacher, if more specialised support needed

Q: What will happen if my child is identified with special educational needs?

The SENDCO will meet with you, your child and any other agencies already providing support. We will discuss your child's specific learning needs and the support options available.

This might include:

- Differentiated learning approaches, resources
- The most appropriate ability set
- Additional support from subject specialists, teaching assistant or external agencies
- Referral for specialist assessment and/or support
- Support for you

Q: How will the school monitor and evaluate my child's progress?

We have high aspirations for all of our pupils, including those with SEND. We expect every pupil, regardless of their starting point/level of ability, to make at least expected progress within each academic year.

Progress will be monitored by:

- Formal assessments in Mathematics and English (Reading and Writing) every six weeks
- Analysis of pupil progress data at regular Senior Leader meetings
- Review of interventions/support
- Feedback from parents and pupils
- Regular feedback to the SENDCO from all staff delivering interventions/support

Q: How will I know how my child is progressing?

- Parents evenings three times a year
- Termly reports: report cards- Autumn and Spring; annual report to parents- Summer
- Additional (often termly) formal review meetings with you and your child
- Informal updates given by SENDCO/ or class teacher during the term

Q: What will the school do if my child is making less progress than expected?

- SENDCO will meet with you and your child to discuss progress
- Targets will be reviewed & revised where necessary
- Existing interventions/support will continue if appropriate
- New interventions/support will be put in place and monitored
- If appropriate, referral for assessment/support from an external agency
- Strategies for you to support your child

- Any barriers to progress reviewed e.g. behaviour, attendance

Q: How will Nishkam School help me to support my child?

- We will provide information on topics your child will study on a half termly basis
- A review meeting will be held with you and your child to discuss progress and ways you can support your child's learning and general development
- We will advise you on additional sources of information or other agencies who can help

You can contact the SENDCO at any point during the year to seek advice or to discuss any concerns you may have.

Q: How will teaching staff know about my child's needs and provide the right kind of support?

- Information about your child and his/her particular needs will be shared with all teaching staff
- All staff will receive ongoing training
- All teaching will be based on the Quality First Teaching model
- Support by the associate teacher will be targeted at those pupils with the greatest need
- All teachers will be involved in regular assessments and reviews of all pupils
- Any additional targets/ further interventions will be discussed with you and your child
- SENDCO will work closely with a range of external agencies
- Additional diagnostic screening will be arranged if appropriate
- Applications for special access arrangements will be made as necessary for any pupil sitting public examinations (SATs).

Q: How will the school curriculum and learning environment be adapted for my child if he/she has special educational needs?

We believe that all pupils should have access to the full National Curriculum. However, there may be exceptional cases which require a different approach. We will seek the views of you and your child before making any changes. We will conduct regular sensory checks of the learning environment, and also ensure that the needs are met of any pupil with a physical disability or long-term medical condition.

Q: How will the school decide the type of, and how much, support my child will receive?

Decisions will be based on:

- Assessment results & teacher observations
- The views of you and your child
- Discussions with all relevant staff
- Review of current levels of investment
- Discussions where appropriate with Communication Autism Team, Pupil & School Support Service, Education Psychologist or any other relevant external agency

Q: If my child has special needs will he/she be excluded from any activities?

Nishkam School believes strongly in inclusivity for all pupils. We will do everything we can to ensure that your child is able to participate fully in all aspects of school life. However, it should be noted that at present we do not have qualified escorts or medical carers.

Q: My child has an ongoing/long term medical condition – how will Nishkam School support him/her?

- Arrange a meeting with yourself to gather all the necessary medical information/history and seek your first-hand knowledge
- Establish an agreed written protocol alongside a lead medical professional
- Ensure staff receive relevant awareness training
- Make arrangements, where possible, for special access/facilities
- Supervise the consumption of any prescribed medications
- Advise pupils on how to stay safe in the school environment
- Provide a staff/peer mentor if required
- Regular liaison/ review meetings with you, your child and any external agencies involved

Q: What extra-curricular activities does the school offer?

- o Sports clubs
- o Art club
- o Music tuition
- o Theatre trips
- o Visits to places of interest
- o Residential visits
- o Enrichment Day at the end of each term.

Q: Which external agencies* do the school work/have links with?

Nishkam Primary School has established links with these Birmingham services.

*These services are subject to the Local Offer provided by the Local Authority:

| Agency/Service | What they do |
|--|--|
| Education Psychology Service(EPS) | When/where necessary we will buy block packages into the EPS and have an Education Psychologist assigned, who will advise/ support the school. They will work with pupils who have more significant and complex needs. They also provide staff with advice on teaching strategies, resources, and training for individuals/whole school. |
| Pupil and School Support Service (PSSS) | Nishkam School currently has a designated PSSS advisor supporting us. Our advisor visits the school for a half day every half term. She provides: <ul style="list-style-type: none">• school staff with advice on teaching strategies and resources, individual and whole school training to support pupils with difficulties in language, literacy and Maths.• individual assessments of pupils who are not making progress in language, literacy and maths and advise on next steps. |
| Speech and Language Therapy Service (SaLT) | SaLT work with pupils who have specific speech or language needs. Referrals are made by the GP or school. The services provide the school with advice on work that can be carried out in school as well as providing specific programmes in clinic. |
| Communication and Autism Team(C.A.T) | The Team supports pupils with social and communication difficulties or a formal diagnosis of Autism. They provide individual and whole school training for staff with advice on teaching strategies, resources for pupils with Autism. |

| | |
|---|---|
| | We currently have a designated C.A.T advisor supporting us. All our teaching staff and a majority of dinner ladies received the Level 1 Autism awareness |
| Sensory Support Service | The service works supports pupils with visual or hearing impairments. Provide school with advice regarding resources and strategies to support children with sensory impairments. All our teaching staff have received Deaf Awareness Training and Reception staff, SENDCO and SEN HLTA are currently undergoing weekly BSL (British Sign Language) training sessions. |
| Child and Adolescent Mental Health Services (CAMHS) | CAMHS support pupils with specific mental health issues e.g. anxiety/depression. Referral can be made by the G.P, School or Education Psychologist. |
| Physical Disabilities Support Service (PDSS) | Provide advice and support for staff working with individual children with physical needs. Referral can be made by G.P and school We currently have a designated PDSS advisor supporting us. |
| Health professionals | Provide advice and support for staff working with individual children with health needs. School Nursing Team School Medical Service School Immunisation Service Occupational therapist Physiotherapist Child Development Centre We currently have a designated School Nurse supporting us. |

Some pupils/parents have received support from other agencies either in their previous school or at NPSB, these include:

- Malachi Trust
- Big Community
- Think Family
- Barnardos

Q: What is the Local Offer?

The Children and Families Bill requires every Local Authority to publish its Local Offer on its website from 1st September 2014. The Local Offer will provide information on the range of services available in the area to meet the needs of all children, young people and parents across the 0-25 year age range. You can access the Local Offer for your area by clicking on the appropriate link below:

| | |
|------------|---|
| Birmingham | https://www.localofferbirmingham.co.uk/ |
| Dudley | www.dudley.gov.uk/resident/learning-school/parentalsupport/dpp/dudleys-local-offer-coming-soon/ |
| Sandwell | http://changingourlives.org/our-work/childrens/changingyoung-lives/changing-young-lives-sandwell/item/477-the-localoffer-in-sandwell |
| Walsall | http://cms.walsall.gov.uk/sen_and_disabilities |

Q: Who do I contact if I am concerned about a child protection issue?

The Deputy Head teacher is the Designated Safeguarding Lead. If you have any concerns about a safeguarding issue, please make contact immediately. In her absence, please ask to speak to the Deputy Safeguarding Lead or the Head teacher.

Alternatively, you can contact the Safeguarding Lead Officer in the Local Authority which covers the area where you live.

Q: Who do I contact if I need more information?

Please contact the school SENDCO in the first instance.