



Safeguarding and Child Protection Policy and Procedures

Approved by:	Trustees	Date: September 2025
Last reviewed on:	September 2025	

Contents

1. Aims and Principles	2
2. Legislation and Guidance	2
3. Definitions	3
4. Equality statement	4
5. Roles and Responsibilities.....	5
6. Confidentiality	9
7. Recognising abuse and taking action	11
8. Online safety and the use of mobile technology including cameras.....	21
9. Notifying Parents / Carers.....	23
10. Pupils with Special Educational Needs and Disabilities (SEND) or health issues.....	23
11. Pupils with a social worker	24
12. Looked-after and previously looked-after children	24
13. Pupils who are lesbian, gay, bisexual or gender questioning.....	24
14. Safeguarding against coercive religious conversion.....	26
15. Complaints and concerns about school safeguarding policies.....	26
16. Record-keeping.....	27
17. Training	28
18. Monitoring and Review	29
19. Links with other policies.....	29
Appendix 1: Definitions of Abuse.....	30
Appendix 2: Safer recruitment and DBS checks – policy and procedures.....	33
Appendix 3: Allegations of abuse made against staff (including low level concerns).....	38
Section 1: Allegations that may meet the harm threshold.....	38
Section 2: Concerns that do not meet the harm threshold	44
Appendix 4: Specific safeguarding issues	46
Appendix 5: Safeguarding against Coercive Religious Conversion Teaching Resource.....	57

Contact details and address;
 152 Syon Lane
 Isleworth
 TW7 5PN

Role/Agency	Name	Telephone	E-mail
Designated Safeguarding Lead (Primary phase)	Mrs Sukhjeet Rai	0203 141 8760	enquiries.nswl@nishkamschools.org
Designated Safeguarding Lead (Secondary phase)	Miss J Atkin	0203 141 8760	Enquiries.nswl@nishkamschools.org
Chair of Governors	Mr B Panesar	0203 141 8760	Enquiries.nswl@nishkamschools.org
Safeguarding Governor	Mr B Panesar	0203 141 8760	Enquiries.nswl@nishkamschools.org
Looked after Children and Previously Looked After Children Lead	Mrs Sukhjeet Rai Miss J Atkin	0203 141 8760	Enquiries.nswl@nishkamschools.org
MASH	Social Care	0208 583 6600	childrensocialcare@hounslow.gov.uk
Social Care out of hours	Social Care	0208 583 2222	childrensocialcare@hounslow.gov.uk
Children's Disability Team	Social Care	0208 583 6600	childrensocialcare@hounslow.gov.uk
Designated Officer/LADO	Grace Murphy Sarah Paltenghi	0208 583 4933	grace.murphy@hounslow.gov.uk sarah.paltenghi@hounslow.gov.uk
Prevent – Community Safety Team	Najeeb Ahmad		Najeeb.ahmad@hounslow.gov.uk
FGM	Police	101 or 999	
Police	Police	101 Option 3 for WMP or 999	
Virtual School	Kate Elliott	0208 583 2745	kate.elliott@hounslow.gov.uk
NSPCC Whistleblowing helpline	NSPCC	0800 028 0285	help@nspcc.org.uk
SPOC	Mrs Sukhjeet Rai	0203 141 8760	enquiries.nswl@nishkamschools.org

Our Vision and Ethos

Nishkam schools are Sikh ethos multi faith or faith ethos schools that take a distinctive approach to many traditional faith or faith ethos schools. The Nishkam Schools Multi-Academy Trust education model is led by virtues such as, compassion, humility, service, contentment, optimism, trust and forgiveness. Virtues are prevalent throughout our teaching and learning model and are modelled by our pupils, staff and teachers. Our pupils explore the divine context of humanity and wonder of all creation and also learn from the wisdom of all religions and in doing so explore the infinite human potential to do good unconditionally. We support all pupils and staff to develop aspects of their own religious, spiritual or human identities. In service of God, we pray for guidance in this endeavour and forgiveness for the errors we may make.

1. Aims and Principles

Our Trust is committed to safeguarding and promoting the welfare of all children and young people and it is expected **everyone** who works in our schools will share this commitment.

Our Trust aims to ensure that;

- All staff are aware of their statutory responsibilities and properly trained in recognising and reporting safeguarding concerns.
- The Trust aims to ensure that appropriate action is taken in a timely manner to safeguard our pupils.

All staff and volunteers have a responsibility to provide a safe environment in which children and young people can learn and be protected from harm.

Promoting the welfare of our children and young people is everyone's responsibility. Everyone that comes into contact with our children and families has a role to play in identifying concerns, sharing information and taking prompt action.

Demonstrating commitment to ensure consistent good practice across the school whilst protecting and supporting our vulnerable children. All pupils have the right to speak freely and voice their values and beliefs, be encouraged to respect each other's values and support each other. All staff maintain an attitude of 'it could happen here', where safeguarding is concerned, and we ensure that everyone is aware of their safeguarding responsibilities and always act in the best interest of the child

2. Legislation and Guidance

This policy is based on the Department for Education's (DfE's) statutory guidance [Keeping Children Safe in Education \(2025\)](#) and [Working Together to Safeguard Children \(2023\)](#), and the [Academy trust governance guide](#). We comply with this guidance and the arrangements agreed and published by our local safeguarding partners.

This policy is also based on the following legislation:

- Part 3 of the schedule to the [Education \(Independent School Standards\) Regulations 2014](#), which places a duty on academies and independent schools to safeguard and promote the welfare of pupils at the school
- [The Children Act 1989](#) (and [2004 amendment](#)), which provides a framework for the care and protection of children
- Section 5B(11) of the Female Genital Mutilation Act 2003, as inserted by section 74 of the [Serious Crime Act 2015](#), which places a statutory duty on teachers to report to the police where they discover that female genital mutilation (FGM) appears to have been carried out on a girl under 18
- [Statutory guidance on FGM](#), which sets out responsibilities with regards to safeguarding and supporting girls affected by FGM

- [The Rehabilitation of Offenders Act 1974](#), which outlines when people with criminal convictions can work with children
- Schedule 4 of the [Safeguarding Vulnerable Groups Act 2006](#), which defines what ‘regulated activity’ is in relation to children
- [Statutory guidance on the Prevent duty](#), which explains schools’ duties under the Counter-Terrorism and Security Act 2015 with respect to protecting people from the risk of radicalisation and extremism
- [The Human Rights Act 1998](#), which explains that being subjected to harassment, violence and/or abuse, including that of a sexual nature, may breach any or all of the rights which apply to individuals under the [European Convention on Human Rights](#) (ECHR)
- [The Equality Act 2010](#), which makes it unlawful to discriminate against people regarding particular protected characteristics (including disability, sex, sexual orientation, gender reassignment and race). This means our governors and School Leader should carefully consider how they are supporting their pupils with regard to these characteristics. The Act allows our school to take positive action to deal with particular disadvantages affecting pupils (where we can show it’s proportionate). This includes making reasonable adjustments for disabled pupils. For example, it could include taking positive action to support girls where there’s evidence that they’re being disproportionately subjected to sexual violence or harassment
- [The Public Sector Equality Duty \(PSED\)](#), which explains that we must have due regard to eliminating unlawful discrimination, harassment and victimisation. The PSED helps us to focus on key issues of concern and how to improve pupil outcomes. Some pupils may be more at risk of harm from issues such as sexual violence; homophobic, biphobic or transphobic bullying; or racial discrimination

Primary phase only:

- The [Childcare \(Disqualification\) and Childcare \(Early Years Provision Free of Charge\) \(Extended Entitlement\) \(Amendment\) Regulations 2018](#) (referred to in this policy as the “2018 Childcare Disqualification Regulations”) and [Childcare Act 2006](#), which set out who is disqualified from working with children
- This policy also meets requirements relating to safeguarding and welfare in the [statutory framework for the Early Years Foundation Stage](#)

This policy also complies with our funding agreement and articles of association.

3. Definitions

Safeguarding and promoting the welfare of children means:

- Providing help and support to meet the needs of children as soon as problems emerge
- Protecting children from maltreatment, whether that is within or outside of the home, including online
- Preventing impairment of children’s mental and physical health or development
- Ensuring that children grow up in circumstances consistent with the provision of safe and effective care
- Taking action to enable all children to have the best outcomes

Child protection is part of this definition and refers to activities undertaken to prevent children suffering, or being likely to suffer, significant harm.

Abuse is a form of maltreatment of a child and may involve inflicting harm or failing to act to prevent harm. Appendix I explains the different types of abuse.

Neglect is a form of abuse and is the persistent failure to meet a child's basic physical and/or psychological needs, likely to result in the serious impairment of the child's health or development. Appendix 1 defines neglect in more detail.

Sharing of nudes and semi-nudes (also known as sexting or youth produced sexual imagery) is where children share nude or semi-nude images, videos or live streams. This also includes pseudo-images that are computer-generated images that otherwise appear to be a photograph or video.

'Children' includes everyone under the age of 18.

The following 3 safeguarding partners are identified in Keeping Children Safe in Education 2025 (and defined in the Children Act 2004, as amended by chapter 2 of the Children and Social Work Act 2017). They will make arrangements to work together to safeguard and promote the welfare of local children, including identifying and responding to their needs:

- The local authority (LA)
- A clinical commissioning group for an area within the LA
- The chief officer of police for a police area in the LA area

Victim is a widely understood and recognised term; we acknowledge that not everyone who has experienced abuse identifies as such. When managing an incident, we will be prepared to use any term that the child involved feels most comfortable with.

Alleged perpetrator(s) and perpetrator(s) are widely used and recognised terms. we consider the impact of our language, especially in front of children. Abusive behaviour can be harmful to the perpetrator too. We will choose appropriate terms on a case-by-case basis.

4. Equality statement

Some children have an increased risk of abuse, and additional barriers can exist for some children with respect to recognising or disclosing it. We are committed to anti-discriminatory practice and recognise children's diverse circumstances. We prioritise the safety and well-being of all children regardless of any barriers they may face. We give special consideration to children who:

- May experience discrimination due to their race, ethnicity, religion, gender identification or sexuality
- Have English as an additional language
- Are disabled or have certain health conditions and has specific additional needs
- Have special educational needs (whether or not they have a statutory Education, Health and Care plan)
- Have a mental health need
- Are a young carer
- Are showing signs of being drawn in to anti-social or criminal behaviour, including gang involvement and association with organised crime groups or county lines
- Are frequently missing/goes missing from education, home or care,
- Have experienced multiple suspensions, are at risk of being permanently excluded from schools, colleges and in Alternative Provision or a Pupil Referral Unit.
- Are at risk of modern slavery, trafficking, sexual and/or criminal exploitation
- Are at risk of being radicalised or exploited
- Have a parent or carer in custody, or are affected by parental offending
- Are in a family circumstance presenting challenges for the child, such as drug and alcohol misuse, adult mental health issues and domestic abuse
- Are misusing alcohol and other drugs themselves

- Are at risk of so-called 'honour'-based abuse such as Female Genital Mutilation or Forced Marriage
- Are a privately fostered child

5. Roles and Responsibilities

Safeguarding and child protection is everyone's responsibility. This policy applies to all staff, volunteers and governors in the school and is consistent with the procedures of the 3 safeguarding partners. Our policy and procedures also apply to extended school and off-site activities.

The school plays a crucial role in preventative education. This is in the context of a whole-school approach to preparing pupils for life in modern Britain, and a culture of zero tolerance of sexism, child-on-child abuse, misogyny/misandry, homophobia, biphobia and sexual violence/harassment. This will be underpinned by our:

- Behaviour policy
- Pastoral support system
- Planned programme of relationships and health education (RHE), which is inclusive and delivered regularly, which can be accessed from the RHE Policy which is available on the school website

5.1 All Staff

All staff will:

- Read and understand Keeping Children Safe in Education (KCSIE 2025) Part one, and Annex B annually and be made aware of the systems which support safeguarding, including this Safeguarding and Child Protection Policy, staff code of conduct, the role and identity of the DSL and Deputy DSLs, the Behaviour Policy and the safeguarding response to children who go missing from education. Where staff are unsure, they will always speak to the DSL or Deputy DSL.
- Sign a declaration at the beginning of each academic year to say that they have reviewed the latest KCSIE guidance and read this policy
- Reinforce the importance of online safety when communicating with parents and carers. This includes making parents/carers aware of what we ask children to do online (e.g. sites they need to visit or who they'll be interacting with online)
- Provide a safe space for pupils who are LGBTQ+ to speak out and share their concerns

All staff will be aware of:

- The early help assessment process and their role in it, including identifying emerging problems, liaising with the DSL, and sharing information with other professionals to support early identification and assessment
- The process for making referrals to local authority children's social care and for statutory assessments that may follow a referral, including the role they might be expected to play
- What to do if they identify a safeguarding issue or a child tells them they are being abused or neglected, including specific issues such as FGM, and how to maintain an appropriate level of confidentiality while liaising with relevant professionals
- The signs of different types of abuse, neglect and exploitation, including domestic and sexual abuse (including controlling and coercive behaviour as well as parental conflict that is frequent, intense, and unresolved), as well as specific safeguarding issues, such as child-on-child abuse, child sexual exploitation (CSE), child criminal exploitation (CCE), indicators of being at risk from or involved with serious violent crime, FGM, radicalisation and serious violence (including that linked to county lines)

- New and emerging threats, including online harm, grooming, sexual exploitation, criminal exploitation, radicalisation, and the role of technology and social media in presenting harm
- The importance of reassuring victims that they are being taken seriously and that they will be supported and kept safe
- The fact that children can be at risk of harm inside and outside of their home, at school and online
- The fact that children who are (or who are perceived to be) lesbian, gay, bi or trans (LGBTQ+) can be targeted by other children
- That a child and their family may be experiencing multiple needs at the same time
- What to look for to identify children who need help or protection

Section 15 and appendix 4 of this policy outline in more detail how staff are supported to do this.

5.2 The Designated Safeguarding Lead (DSL)

Every school in the trust has its own DSL. Details of the DSL at individual schools are available from each school office.

The DSL at each school is a member of the school's senior leadership team. They take lead responsibility for child protection and wider safeguarding at that school. This includes online safety and understanding filtering and monitoring processes on school devices and school networks to keep pupils safe online.

During term time, the DSL will be available during school hours for staff to discuss any safeguarding concerns. In the absence of the DSL the Deputy DSL will act as cover. If the DSL and Deputy DSL are not available, the School Leader will act as cover (for example, during out-of-hours/out-of-term activities).

The DSL will be given the time, funding, training, resources and support to:

- Provide advice and support to other staff on child welfare and child protection matters
- Take part in strategy discussions and inter-agency meetings and/or support other staff to do so
- Contribute to the assessment of children
- Refer suspected cases, as appropriate, to the relevant body (local authority children's social care, Channel programme, Disclosure and Barring Service (DBS), and/or police), and support staff who make such referrals directly
- Have a good understanding of harmful sexual behaviour
- Have a good understanding of the filtering and monitoring systems and processes in place at their school
- Where the DSL is also the Prevent lead, they will make sure that staff have appropriate Prevent training and induction

The DSL will also:

- Keep the School Leader informed of any issues
- Liaise with local authority case managers and designated officers for child protection concerns as appropriate
- Discuss the local response to sexual violence and sexual harassment with police and local authority children's social care colleagues to prepare the school's policies
- Be confident that they know what local specialist support is available to support all children involved (including victims and alleged perpetrators) in sexual violence and sexual harassment, and be confident as to how to access this support
- Be aware that children must have an 'appropriate adult' to support and help them in the case of a police investigation or search

The full responsibilities of the DSL and DDSL are set out in their job description.

5.3 The Board of Trustees

The Board will:

- Facilitate a whole-trust approach to safeguarding, ensuring that safeguarding and child protection are at the forefront of, and underpin, all relevant aspects of process and policy development
- Evaluate and approve this policy at each review, ensuring it complies with the law, and hold the School Leader to account for its implementation
- Be aware of its obligations under the Human Rights Act 1998, the Equality Act 2010 (including the Public Sector Equality Duty), and the trust/school's local multi-agency safeguarding arrangements
- Appoint a senior board level (or equivalent) lead, or link trustee, to monitor the effectiveness of this policy in conjunction with the full Trust Board
- Ensure all staff undergo safeguarding and child protection training, including online safety, and that such training is regularly updated and is in line with advice from the safeguarding partners
- Ensure that each school has appropriate filtering and monitoring systems in place and review their effectiveness. This includes:
 - Making sure that the leadership team and staff are aware of the provisions in place, and that they understand their expectations, roles and responsibilities around filtering and monitoring as part of safeguarding training
 - Reviewing the [DfE's filtering and monitoring standards](#), and discussing with IT staff and service providers what needs to be done to support the school in meeting these standards
- Make sure:
 - The DSL has the appropriate status and authority to carry out their job, including additional time, funding, training, resources and support
 - Online safety is a running and interrelated theme within the whole-trust approach to safeguarding and related policies
 - The DSL has lead authority for safeguarding, including online safety and understanding the filtering and monitoring systems and processes in place
 - The trust has procedures to manage any safeguarding concerns (no matter how small) or allegations that do not meet the harm threshold (low-level concerns) about staff members (including supply staff, volunteers and contractors). Appendix 3 of this policy covers this procedure
 - That this policy reflects that children with SEND, or certain medical or physical health conditions, can face additional barriers to any abuse or neglect being recognised
 - Where another body is providing services or activities (regardless of whether or not the children who attend these services/activities are children on the school roll):
 - Seek assurance that the other body has appropriate safeguarding and child protection policies/procedures in place, and inspect them if needed
 - Make sure there are arrangements for the body to liaise with the school about safeguarding arrangements, where appropriate
 - Make sure that safeguarding requirements are a condition of using the school premises, and that any agreement to use the premises would be terminated if the other body fails to comply
 - All Trustees and Local Governors read Keeping Children Safe in Education in its entirety.

5.4 The Local Advisory Body (LAB)

The LAB will:

- Review the school-specific elements of the policy after the trust level policy has been reviewed and approved.
- Hold the school leader to account for the implementation of the policy.
- Appoint a member of each local advisory board to act as the governor responsible for safeguarding, to liaise with the school's DSL on local safeguarding issues.
- Ensure that the chair of the local advisory board will act as the 'case manager' in the event that an allegation of abuse is made against the school leader where appropriate (see appendix 3).
- Facilitate a whole-school approach to safeguarding, ensuring that safeguarding and child protection are at the forefront of, and underpin, all relevant aspects of process and policy development
- Ensure the DSL has appropriate status and authority to carry out their job, including additional time, funding, training, resources and support
- Ensure online safety is integrated into the overall approach to safeguarding.
- Ensure that the school has appropriate filtering and monitoring systems in place and review their effectiveness.
- Ensure all staff are aware of the provisions in place, and that they understand their expectations, roles and responsibilities around filtering and monitoring as part of safeguarding training
- Ensure all staff undergo safeguarding and child protection training, -including online safety, filtering and monitoring, and that such training is regularly updated
- Ensure the school has procedures to manage any safeguarding concerns or allegations that do not meet the harm threshold (low-level concerns) about staff members (including supply staff, volunteers and contractors). Appendix 3 of this policy covers this procedure
- Make sure that:
 - Where another body is providing services or activities (regardless of whether or not the children who attend these services/activities are children on the school roll):
 - Seek assurance that the other body has appropriate safeguarding and child protection policies/procedures in place, and inspect them if needed
 - Make sure there are arrangements for the body to liaise with the school about safeguarding arrangements, where appropriate
 - Make sure that safeguarding requirements are a condition of using the school premises, and that any agreement to use the premises would be terminated if the other body fails to comply

All Governors will read Keeping Children Safe in Education 2025 Part One.

5.4 The School Leader:

The School Leader is responsible for the implementation of this policy, including:

- Ensuring that staff (including temporary staff) and volunteers are informed of our systems which support safeguarding, and understand and follow the procedures included in this policy, particularly those concerning referrals of cases of suspected abuse and neglect
- Communicating this policy to parents when their child joins the school and via the school website
- Ensuring that the DSL has appropriate time, funding, training and resources, and that there is always adequate cover if the DSL is absent
- Ensuring that all staff undertake appropriate safeguarding and child protection training and update this regularly
- Acting as the 'case manager' in the event of an allegation of abuse made against another member of staff or volunteer, where appropriate
- Making decisions regarding all low-level concerns, though they may wish to collaborate with the DSL on this

Primary phase only:

- Ensuring the relevant staffing ratios are met, where applicable
- Making sure each child in the Early Years Foundation Stage is assigned a key person
- Overseeing the safe use of technology, mobile phones and cameras in the setting

5.5 Virtual School Heads:

A Virtual School Head (VSH) is a statutory role within every local authority in England.

- VSHs have a non-statutory responsibility for the strategic oversight of the educational attendance, attainment and progress of pupils with a social worker.
- They also have a non-statutory responsibility to promote the educational achievement of children in kinship care (children who live with a relative or close family friend).
- VSHs should also identify and engage with key professionals, e.g. DSLs, special educational needs co-ordinators (SENCOs), social workers, mental health leads and others.

6. Confidentiality

- Timely information sharing is essential to effective safeguarding.
- Fears about sharing information must not be allowed to stand in the way of the need to promote the welfare, and protect the safety, of children
- The Data Protection Act (DPA) 2018 and UK GDPR do not prevent, or limit, the sharing of information for the purposes of keeping children safe
- If staff need to share 'special category personal data', the DPA 2018 contains 'safeguarding of children and individuals at risk' as a processing condition that allows practitioners to share information without consent if:
 - it is not possible to gain consent;
 - it cannot be reasonably expected that a practitioner gains consent; or if to gain consent would place a child at risk
- Staff should never promise a child that they will not tell anyone about a report of abuse, as this may not be in the child's best interests.
- If a victim asks the school not to tell anyone about the sexual violence or sexual harassment:
 - There's no definitive answer, because even if a victim doesn't consent to sharing information,

- staff may still lawfully share it if there's another legal basis under the UK GDPR that applies
- The DSL will have to balance the victim's wishes against their duty to protect the victim and other children
 - The DSL should consider that:
 - Parents or carers should normally be informed (unless this would put the victim at greater risk)
 - The basic safeguarding principle is: if a child is at risk of harm, is in immediate danger, or has been harmed, a referral should be made to local authority children's social care
 - Rape, assault by penetration and sexual assault are crimes. Where a report of rape, assault by penetration or sexual assault is made, this should be referred to the police. While the age of criminal responsibility is 10, if the alleged perpetrator is under 10, the starting principle of referring to the police remains
 - Regarding anonymity, all staff will:
 - Be aware of anonymity, witness support and the criminal process in general where an allegation of sexual violence or sexual harassment is progressing through the criminal justice system
 - Do all they reasonably can to protect the anonymity of any children involved in any report of sexual violence or sexual harassment, for example, carefully considering which staff should know about the report, and any support for children involved
 - Consider the potential impact of social media in facilitating the spreading of rumours and exposing victims' identities
 - The government's [information sharing advice for safeguarding practitioners](#) includes 7 'golden rules' for sharing information, and will support staff who have to make decisions about sharing information
 - If staff are in any doubt about sharing information, they should speak to the DSL (or deputy)
 - Confidentiality is also addressed in this policy with respect to record-keeping in section 14, and allegations of abuse against staff in appendix 3

7. Recognising abuse and taking action

All staff are expected to be able to identify and recognise all forms of abuse, neglect and exploitation and shall be alert to the potential need for early help for a child who:

- Is disabled
- Has special educational needs (whether or not they have a statutory education health and care (EHC) plan)
- Is a young carer
- Is bereaved
- Is showing signs of being drawn into anti-social or criminal behaviour, including being affected by gangs and county lines and organised crime groups and/or serious violence, including knife crime
- Is frequently missing/goes missing from education, care or home
- Is at risk of modern slavery, trafficking, sexual and/or criminal exploitation
- Is at risk of being radicalised or exploited
- Is viewing problematic and/or inappropriate online content (for example, linked to violence), or developing inappropriate relationships online
- Is in a family circumstance presenting challenges for the child, such as drug and alcohol misuse, adult mental health issues and domestic abuse
- Is misusing drugs or alcohol
- Is suffering from mental ill health
- Has returned home to their family from care
- Is at risk of so-called 'honour'-based abuse such as female genital mutilation (FGM) or forced marriage
- Is a privately fostered child
- Has a parent or carer in custody or is affected by parental offending
- Is missing education, or persistently absent from school, or not in receipt of full-time education
- Has experienced multiple suspensions and is at risk of, or has been permanently excluded

Staff, volunteers and governors must follow the procedures set out below in the event of a safeguarding issue.

Please note – in this and subsequent sections, you should take any references to the DSL to mean “the DSL (or deputy DSL)”.

7.1 If a child is suffering or likely to suffer harm, or in immediate danger

Make a referral to children’s social care and/or the police immediately if you believe a child is suffering or likely to suffer from harm, or in immediate danger. Anyone can make a referral. Tell the DSL as soon as possible if you make a referral directly.

The following link to the GOV.UK webpage for reporting child abuse to your local council;

<https://www.gov.uk/report-child-abuse-to-local-council>

7.2 If a child makes a disclosure to you

- Stay calm, do not communicate shock, anger or embarrassment
- Reassure the child, tell her/him you are pleased that s/he is speaking to you
- Explain and assure the child that you will need to involve others to help. State who this will be and why
- Praise the child for telling you. Communicate that s/he has a right to be safe and protected
- As soon as you can afterwards, make a detailed record of the conversation using the child’s own language on the school’s reporting form. Include any questions you may have asked. Do not add any opinions or interpretations. Ensure the record is dated and signed
- Sign and date the write-up and pass it on to the DSL. Alternatively, if appropriate, make a referral to children’s social care and/or the police directly (see 7.1), and tell the DSL as soon as possible that you have done so. Aside from these people, do not disclose the information to anyone else unless told to do so by a relevant authority involved in the safeguarding process
- **You must not deal with this yourself.** Clear indications or disclosure of abuse must be reported to children’s social care without delay, by the Principal or the DSL; Aside from these people, do not disclose the information to anyone else unless told to do so by a relevant authority involved in the safeguarding process
- Children making a disclosure may do so with difficulty, having chosen carefully to whom they will speak. Listening to and supporting a child/young person who has been abused can be traumatic for the adults involved. Support for you will be available from your DSL or Principal.

Bear in mind that some children may:

- Not feel ready, or know how to tell someone that they are being abused, exploited or neglected
- Not recognise their experiences as harmful
- Feel embarrassed, humiliated or threatened. This could be due to their vulnerability, disability, sexual orientation and/or language barriers
- None of this should stop you from having a ‘professional curiosity’ and speaking to the DSL if you have concerns about a child.

7.3 If you discover that FGM has taken place or a pupil is at risk of FGM

The Department for Education's Keeping Children Safe in Education 2025 explains that FGM comprises "all procedures involving partial or total removal of the external female genitalia, or other injury to the female genital organs".

FGM is illegal in the UK and a form of child abuse with long-lasting, harmful consequences. It is also known as 'female genital cutting', 'circumcision' or 'initiation'. Possible indicators that a pupil has already been subjected to FGM, and factors that suggest a pupil may be at risk.

Any teacher who discovers (either through disclosure by the victim or visual evidence) that an act of FGM appears to have been carried out on a pupil under 18 and they have no reason to believe that the act was necessary for the girl's physical or mental health or for purposes connected with labour or birth must immediately report this to the police, personally.

This is a mandatory statutory duty, and teachers will face disciplinary sanctions for failing to meet it.

Unless they have been specifically told not to disclose, they should also discuss the case with the DSL and involve children's social care as appropriate.

Any other member of staff who discovers that an act of FGM appears to have been carried out on a pupil under 18 must speak to the DSL and follow our local safeguarding procedures.

The duty for teachers mentioned above does not apply in cases where a pupil is *at risk* of FGM or FGM is suspected but is not known to have been carried out. Staff should not examine pupils.

Any member of staff who suspects a pupil is *at risk* of FGM or suspects that FGM has been carried out or discovers that a pupil aged 18 or over appears to have been a victim of FGM should speak to the DSL and follow our local safeguarding procedures.

7.4 If you have concerns about a child (as opposed to believing a child is suffering or likely to suffer from harm, or is in immediate danger)

This [Flowchart – Responding to concerns about a child](#); illustrates the procedure to follow if you have any concerns about a child's welfare.

Where possible, speak to the DSL first to agree a course of action. If in exceptional circumstances the DSL is not available, this should not delay appropriate action being taken.

Speak to a member of the senior leadership team and/or take advice from local authority children's social care.

You can also seek advice at any time from the NSPCC helpline on 0808 800 5000. Share details of any actions you take with the DSL as soon as practically possible.

Make a referral to local authority children's social care directly, if appropriate (see 'Referral' below). Share any action taken with the DSL as soon as possible.

Early help

If early help is appropriate, the DSL will generally lead on liaising with other agencies and setting up an inter-agency assessment as appropriate. Staff may be required to support other agencies and professionals in an early help assessment, in some cases acting as the lead practitioner.

We will discuss and agree, with statutory safeguarding partners, levels for the different types of assessment, as part of local arrangements.

The DSL will keep the case under constant review and the school will consider a referral to local authority children's social care if the situation does not seem to be improving. Timelines of interventions will be monitored and reviewed.

Referral

If it is appropriate to refer the case to local authority children's social care or the police, the DSL will make the referral or support you to do so.

If you make a referral directly you must tell the DSL as soon as possible. The local authority will make a decision within one working day of a referral about what course of action to take and will let the person who made the referral know the outcome. The DSL or person who made the referral must follow up with the local authority if this information is not made available, and ensure outcomes are properly recorded.

If the child's situation does not seem to be improving after the referral, the DSL or person who made the referral must follow local escalation procedures to ensure their concerns have been addressed and that the child's situation improves.

7.5 If you have concerns about extremism

If a child is not suffering or likely to suffer from harm, or in immediate danger, where possible speak to the DSL first to agree a course of action.

If in exceptional circumstances the DSL is not available, this should not delay appropriate action being taken. Speak to a member of the senior leadership team and/or seek advice from local authority children's social care. Make a referral to local authority children's social care directly. Inform the DSL or deputy as soon as practically possible after the referral.

Where there is a concern, the DSL will consider the level of risk and decide which agency to make a referral to. This could include the police or [Channel](#), the government's programme for identifying and supporting individuals at risk of being drawn into terrorism, or the local authority children's social care team.

The Department for Education also has a dedicated telephone helpline, 020 7340 7264, which school staff and governors can call to raise concerns about extremism with respect to a pupil. You can also email counter.extremism@education.gov.uk. Note that this is not for use in emergency situations.

In an emergency, call 999 or the confidential anti-terrorist hotline on 0800 789 321 if you:

- Think someone is in immediate danger;
- Think someone may be planning to travel to join an extremist group and/or see or hear something that may be terrorist-related.

7.6 If you have a mental health concern

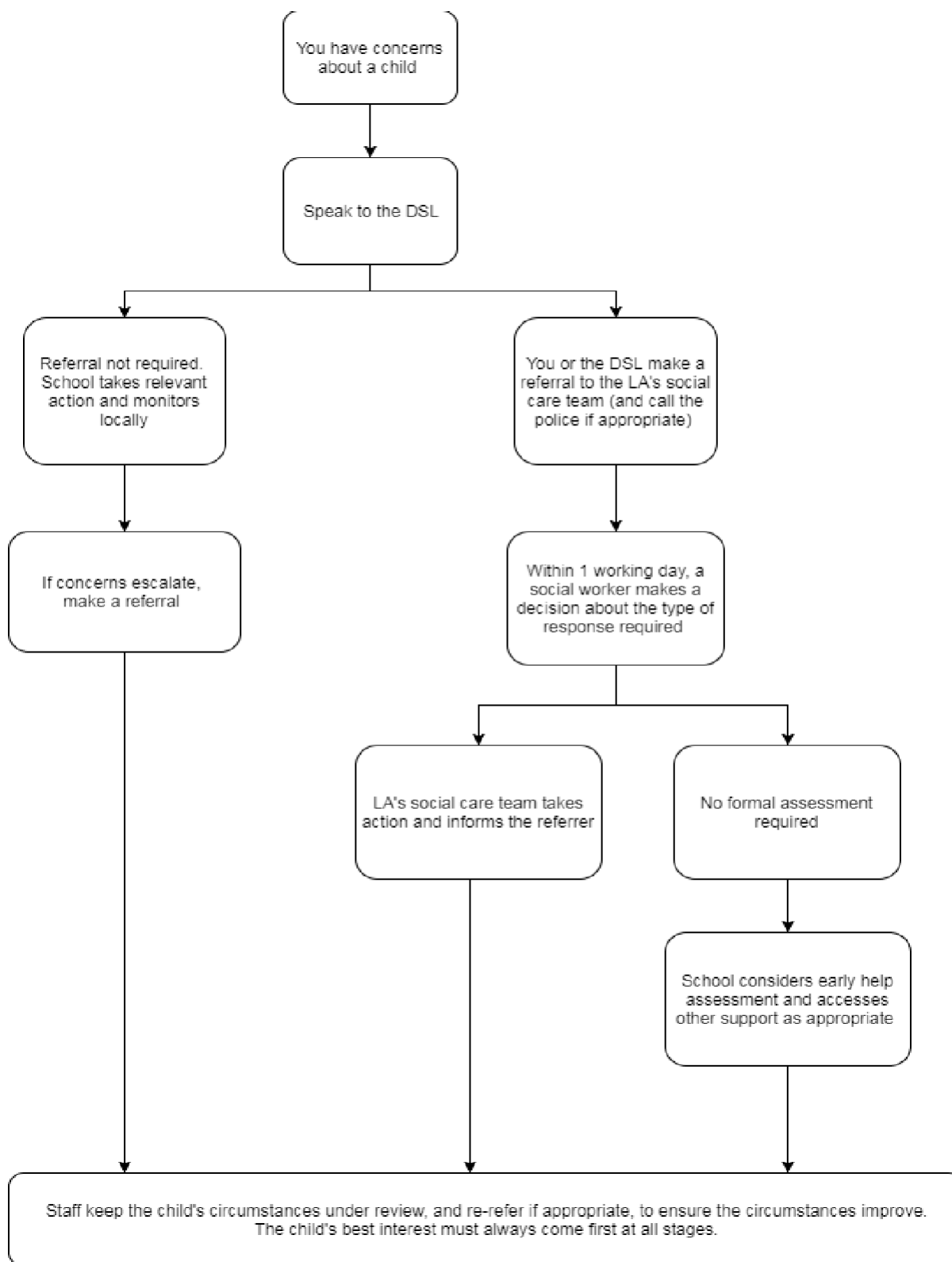
Mental health problems can, in some cases, be an indicator that a child has suffered or is at risk of suffering abuse, neglect or exploitation.

Staff will be alert to behavioural signs that suggest a child may be experiencing a mental health problem or be at risk of developing one.

If you have a mental health concern about a child that is also a safeguarding concern, take immediate action by following the steps in this [Flowchart – Responding to concerns about a child](#).

If you have a mental health concern that is not also a safeguarding concern, speak to the DSL to agree a course of action.

Flowchart: Procedure for responding to concerns about a child



7.7 Concerns about a staff member, supply teacher, contractor or volunteer

If you have concerns about a member of staff (including a supply teacher, volunteer or contractor), or an allegation is made about a member of staff (including a supply teacher, volunteer or contractor) posing a risk of harm to children, speak to the School Leader as soon as possible. If the concerns/allegations are about the School Leader, speak to the chair of governors.

The School Leader /chair of governors will then follow the procedures set out in appendix 3, if appropriate.

Where you believe there is a conflict of interest in reporting a concern or allegation about a member of staff (including a supply teacher, volunteer or contractor) to the School Leader, report it directly to the local authority designated officer (LADO).

If you receive an allegation relating to an incident where an individual or organisation was using the school premises for running an activity for children, follow our school safeguarding policies and procedures, informing the LADO, as you would with any safeguarding allegation.

Primary phase only:

Where appropriate, the school will inform Ofsted of the allegation and actions taken, within the necessary timescale (see appendix 3 for more detail).

7.8 Allegations of abuse made against other pupils

We recognise that children are capable of abusing their peers. Abuse will never be tolerated or passed off as “banter”, “just having a laugh”, “part of growing up” or “boys will be boys”, as this can lead to a culture of unacceptable behaviours and an unsafe environment for pupils.

We also recognise the gendered nature of child-on-child abuse. However, all child-on-child abuse is unacceptable and will be taken seriously.

Most cases of pupils hurting other pupils will be dealt with under our school’s behaviour policy, but this child protection and safeguarding policy will apply to any allegations that raise safeguarding concerns. This might include where the alleged behaviour:

- Is serious, and potentially a criminal offence
- Could put pupils in the school at risk
- Is violent
- Involves pupils being forced to use drugs or alcohol
- Involves sexual exploitation, sexual abuse or sexual harassment, such as indecent exposure, sexual assault, upskirting or sexually inappropriate pictures or videos (including the sharing of nudes and semi nudes)

See appendix 4 for more information about child-on-child abuse.

Procedure for dealing with allegations of child-on-child abuse. If a pupil makes an allegation of abuse against another pupil:

- You must record the allegation and tell the DSL, but do not investigate it
- The DSL will contact the local authority children’s social care team and follow its advice, as well as the police if the allegation involves a potential criminal offence
- The DSL will put a risk assessment and support plan into place for all children involved (including the victim(s), the child(ren) against whom the allegation has been made and any others affected) with a named person they can talk to if needed. This will include considering school transport as a potentially vulnerable place for a victim or alleged perpetrator(s)
- The DSL will contact the children and adolescent mental health services (CAMHS), if appropriate
- If the incident is a criminal offence and there are delays in the criminal process, the DSL will work closely with the police (and other agencies as required) while protecting children and/or taking any disciplinary measures against the alleged perpetrator. We will ask the police if we have any questions about the investigation

Creating a supportive environment in school and minimising the risk of child-on-child abuse.

We recognise the importance of taking proactive action to minimise the risk of child-on-child abuse, and of creating a supportive environment where victims feel confident in reporting incidents.

To achieve this, we will:

- Challenging any form of derogatory or sexualised language or behaviour, including requesting or sending sexual images
- Being vigilant to issues that particularly affect different genders – for example, sexualised or aggressive touching or grabbing towards female pupils, and initiation or hazing type violence with respect to boys
- Ensuring our curriculum helps to educate pupils about appropriate behaviour and consent
- Ensuring pupils know they can talk to staff confidently report abuse using our reporting systems
- Ensure staff reassure victims that they are being taken seriously
- Be alert to reports of sexual violence and/or harassment that may point to environmental or systemic problems that could be addressed by updating policies, processes and the curriculum, or could reflect wider issues in the local area that should be shared with safeguarding partners
- Support children who have witnessed sexual violence, especially rape or assault by penetration. We will do all we can to make sure the victim, alleged perpetrator(s) and any witnesses are not bullied or harassed
- Consider intra familial harms and any necessary support for siblings following a report of sexual violence and/or harassment
- Ensure staff are trained to understand
 - How to recognise the indicators and signs of child-on-child abuse, and know how to respond to reports
 - That even if there are no reports of child-on-child abuse in school, it does not mean it is not happening – staff should maintain an attitude of “it could happen here”
 - That if they have any concerns about a child’s welfare, they should act on them immediately, and that victims may not always make a direct report. For example:
 - Children can show signs or act in ways they hope adults will notice and react to
 - A friend may make a report
 - A member of staff may overhear a conversation
 - A child’s behaviour might indicate that something is wrong
 - That certain children may face additional barriers to telling someone because of their vulnerability, disability, gender, ethnicity and/or sexual orientation
 - That a pupil harming a peer could be a sign that the child is being abused themselves, and that this would fall under the scope of this policy
 - The important role they have to play in preventing child-on-child abuse and responding where they believe a child may be at risk from it
 - That they should speak to the DSL if they have any concerns
 - That social media is likely to play a role in the fall-out from any incident or alleged incident, including for potential contact between the victim, alleged perpetrator(s) and friends from either side

The DSL will take the lead role in any disciplining of the alleged perpetrator(s). We will provide support at the same time as taking any disciplinary action.

Disciplinary action can be taken while other investigations are going on, e.g. by the police. The fact that another body is investigating or has investigated an incident doesn’t (in itself) prevent our school from coming to its

own conclusion about what happened and imposing a penalty accordingly. We will consider these matters on a case-by-case basis, taking into account whether:

- Taking action would prejudice an investigation and/or subsequent prosecution – we will liaise with the police and/or LA children’s social care to determine this
- There are circumstances that make it unreasonable or irrational for us to reach our own view about what happened while an independent investigation is ongoing

7.9 Sharing of nudes and semi nudes ('sexting')

Responsibilities when responding to an incident

If you are made aware of an incident involving the consensual or non-consensual sharing of nude or semi-nude images/videos, including pseudo-images, which are computer-generated images that otherwise appear to be a photograph or video (also known as 'sexting' or 'youth produced sexual imagery'), you must report it to the DSL immediately.

You must **not**:

- View, copy, print store or share the imagery yourself, or ask a pupil to share or download it. If you have already viewed the imagery by accident, you must report this to the DSL
- Delete the imagery or ask the pupil to delete it
- Ask the pupil(s) who are involved in the incident to disclose information regarding the imagery (this is the DSL’s responsibility)
- Share information about the incident with other members of staff, the pupil(s) it involves or their, or other, parents and/or carers
- Say or do anything to blame or shame any young people involved

You should explain that you need to report the incident and reassure the pupil(s) that they will receive support and help from the DSL.

Initial review meeting

Following a report of an incident, the DSL will hold an initial review meeting with appropriate school staff. This meeting will consider the initial evidence and aim to determine:

- Whether there is an immediate risk to pupil(s)
- If a referral needs to be made to the police and/or children’s social care
- If it is necessary to view the imagery in order to safeguard the young person (in most cases, imagery should not be viewed)
- What further information is required to decide on the best response
- Whether the imagery has been shared widely and via what services and/or platforms (this may be unknown)
- Whether immediate action should be taken to delete or remove images from devices or online services
- Any relevant facts about the pupils involved which would influence risk assessment
- If there is a need to contact another school, college, setting or individual
- Whether to contact parents or carers of the pupils involved (in most cases parents should be involved)

The DSL will make an immediate referral to police and/or children’s social care if:

- The incident involves an adult;

- There is reason to believe that a young person has been coerced, blackmailed or groomed, or if there are concerns about their capacity to consent (for example owing to special educational needs);
- What the DSL knows about the imagery suggests the content depicts sexual acts which are unusual for the young person's developmental stage, or are violent;
- The imagery involves sexual acts and any pupil in the imagery is under 13;
- The DSL has reason to believe a pupil is at immediate risk of harm owing to the sharing of the imagery (for example, the young person is presenting as suicidal or self-harming).

If none of the above apply then the DSL, in consultation with the School Leader and other members of staff as appropriate, may decide to respond to the incident without involving the police or children's social care. The decision will be made and recorded in line with the procedures set out in this policy.

Further review by the DSL

- If at the initial review stage a decision has been made not to refer to police and/or children's social care, the DSL will conduct a further review. They will hold interviews with the pupils involved (if appropriate) to establish the facts and assess the risks.
- If at any point in the process there is a concern that a pupil has been harmed or is at risk of harm, a referral will be made to children's social care and/or the police immediately.

Informing parents

- The DSL will inform parents at an early stage and keep them involved in the process, unless there is a good reason to believe that involving them would put the pupil at risk of harm.

Referring to the police

- If it is necessary to refer an incident to the police, this will be done through, local neighbourhood police, dialling 101

Recording incidents

- All incidents of sharing nudes and semi nudes, and the decisions made in responding to them will be recorded. The record-keeping arrangements set out in section 14 of this policy also apply to recording of these incidents.

Curriculum coverage

Pupils are taught about the issues surrounding nudes and semi nudes as part of our PSHE education and computing programmes. Teaching covers the following in relation to the sharing of nudes and semi nudes:

- What it is; how it is most likely to be encountered; the consequences of requesting, forwarding or providing such images, including when it is and is not abusive and when it is deemed as online sexual harassment; issues of legality and the risk of damage to people's feelings and reputation.

Pupils also learn the strategies and skills needed to manage:

- Specific requests or pressure to provide (or forward) such images and the receipt of such images.

This section on the sharing of nudes and semi nudes is also shared with pupils so they are aware of the processes the school will follow in the event of an incident.

7.10 Reporting systems for our pupils

Where there is a safeguarding concern, we will take the child's wishes and feelings into account when determining what action to take and what services to provide.

We recognise the importance of ensuring pupils feel safe and comfortable to come forward and report any concerns and/or allegations. To achieve this, we will:

- Put systems in place for pupils to confidently report abuse
- Ensure our reporting systems are well promoted, easily understood and easily accessible for pupils
- Make it clear to pupils that their concerns will be taken seriously, and that they can safely express their views and give feedback

8. Online safety and the use of mobile technology including cameras

We recognise the importance of safeguarding children from potentially harmful and inappropriate online material, and we understand that technology is a significant component in many safeguarding and wellbeing issues. The DSL will act upon any safeguarding concerns in line with safeguarding procedures.

To address this, our school aims to:

- Have robust processes in place (including filtering and monitoring) to ensure the online safety of pupils, staff, volunteers and governors
- Protect and educate the whole school community in its safe and responsible use of technology, including mobile and smart technology (which we refer to as 'mobile phones')
- Set clear guidelines for the use of mobile phones for the whole school community
- Establish clear mechanisms to identify, intervene in and escalate any incidents or concerns, where appropriate

Our approach to online safety is based on addressing the following categories of risk:

- **Content** – being exposed to illegal, inappropriate or harmful content, such as pornography, fake news, racism, misogyny, self-harm, suicide, anti-Semitism, radicalization, extremism, misinformation, disinformation (including fake news) and conspiracy theories
- **Contact** – being subjected to harmful online interaction with other users, such as child-on-child pressure, commercial advertising and adults posing as children or young adults with the intention to groom or exploit them for sexual, criminal, financial or other purposes
- **Conduct** – personal online behaviour that increases the likelihood of, or causes, harm, such as making, sending and receiving explicit images (e.g. consensual and non-consensual sharing of nudes and semi-nudes and/or pornography), sharing other explicit images and online bullying; and
- **Commerce** – risks such as online gambling, inappropriate advertising, phishing and/or financial scam

To meet our aims and address the risks above we will:

- Educate pupils about online safety as part of our curriculum. For example:

- The safe use of social media, the internet and technology
 - Keeping personal information private
 - How to recognise unacceptable behaviour online
 - How to report any incidents of cyber-bullying, ensuring pupils are encouraged to do so, including where they are a witness rather than a victim
- Train staff, as part of their induction, on safe internet use and online safeguarding issues including cyber-bullying and the risks of online radicalisation
 - All staff members will receive refresher training at least once each academic year
 - Educate parents/carers about online safety, filtering and monitoring via our website, communications sent directly to them and during parents' evenings. We will also share clear procedures with them so they know how to raise concerns about online safety
 - Make all pupils, parents/carers, staff, volunteers and governors aware that they are expected to sign and adhere to an agreement regarding the acceptable use of the internet in school, use of the school's ICT systems and use of their mobile and smart technology
 - Explain the sanctions we will use if a pupil is in breach of our policies on the acceptable use of the internet and mobile phones
 - Make sure all staff, pupils and parents/carers are aware that staff have the power to search pupils' phones, as set out in the [DfE's guidance on searching, screening and confiscation](#)
 - Put in place robust filtering and monitoring systems to limit children's exposure to the 4 key categories of risk (described above) from the school's IT systems
 - Carry out an annual review of our approach to online safety, supported by an annual risk assessment that considers and reflects the risks faced by our school community
 - Provide regular safeguarding and children protection updates including online safety to all staff, at least annually, in order to continue to provide them with the relevant skills and knowledge to safeguard effectively
 - Review the child protection and safeguarding policy, including online safety, annually and ensure the procedures and implementation are updated and reviewed regularly

Make sure staff are aware of any restrictions placed on them with regards to the use of their mobile phone and cameras, for example that:

- Staff are allowed to bring their personal phones to school for their own use but will limit such use to non-contact time when pupils are not present
- Staff members' personal phones will remain in their bags or cupboards during contact time with pupils.
- Staff will not take pictures or recordings of pupils on their personal phones or cameras.
- Unauthorised or secret use of a mobile phone or other electronic device, to record voice, pictures or video is forbidden and can result in disciplinary procedures.

- Where any crime may have been committed, the police will be informed
- Mobile phones are permitted to be used under the School Leader's discretion
- All staff must be vigilant and remind any parents/visitors who forget

This section summarises our approach to online safety and mobile phone use. For full details about our policies in these areas, please refer to our online safety policy which can be found on our website. School iPads or similar devices with communications facilities used for curriculum activities are set up appropriately for the activity. Pupils are taught to use them responsibly. Relevant issues will be addressed through other areas of the curriculum as appropriate.

9. Notifying Parents / Carers

Parents will be made aware that any referrals about suspected abuse or neglect may be made by the school. Where appropriate, the school will discuss any child protection concerns with parents / carers. The DSL will normally do this in the event of a suspicion or disclosure. Other staff will only talk to parents / carers about any such concerns following consultation with the DSL. If we believe that notifying the parents or carers would increase the risk to the child, we will discuss this with the local authority children's social care team before doing so.

In the case of allegations of abuse made against other children, we will normally notify the parents of all the children involved. We will think carefully about what information we provide about the other child involved, and when. We will work with the police and/or local authority children's social care to make sure our approach to information sharing is consistent. The DSL will, along with any relevant agencies (this will be decided on a case-by-case basis):

- Meet with the victim's parents or carers, with the victim, to discuss what's being put in place to safeguard them, and understand their wishes in terms of what support they may need and how the report will be progressed
- Meet with the alleged perpetrator's parents or carers to discuss support for them, and what's being put in place that will impact them, e.g. moving them out of classes with the victim, and the reason(s) behind any decision(s)

10. Pupils with Special Educational Needs and Disabilities (SEND) or health issues

We recognise that pupils with special educational needs (SEND) or disabilities or certain health conditions can face additional safeguarding challenges and are more likely to be abused than their peers. Additional barriers can exist when recognising abuse and neglect in children with special educational needs and disabilities. This can include:

- Assumptions that indicators of possible abuse such as behaviour, mood and injury relate to the child's disability without further exploration
- Prone to peer group isolation or bullying (including prejudice-based bullying) than other pupils
- The potential for pupils with SEN and disabilities or certain health conditions can be disproportionately impacted by things like bullying- without outwardly showing any signs; and
- Communication barriers and difficulties in overcoming these barriers
- Cognitive understanding- being able to understand the difference between fact and fiction in online content and then repeating the content/ behaviours in schools or colleges or the consequences of doing so

Any abuse involving pupils with SEND will require close liaison with the DSL (or deputy) and the SENDCo. We will ensure we have appropriate mechanisms in place to assist these children in line with The SEND Code of Practice 2015.

11. Pupils with a social worker

Pupils may need a social worker due to safeguarding or welfare needs. We recognise that a child's experiences of adversity and trauma can leave them vulnerable to further harm as well as potentially creating barriers to attendance, learning, behaviour and mental health.

The DSL and all members of staff will work with and support social workers to help protect vulnerable children. Where we are aware that a pupil has a social worker, the DSL will always consider this fact to ensure any decisions are made in the best interests of the pupil's safety, welfare and educational outcomes.

For example, it will inform decisions about:

- Responding to unauthorised absence or missing education where there are known safeguarding risks
- The provision of pastoral and/or academic support

12. Looked-after and previously looked-after children

We will ensure that staff have the skills, knowledge and understanding necessary to keep looked after children and previously looked after children safe. Previously looked after children are children who have left care through adoption, special guardianship or child arrangement orders or who were adopted from state care outside England and Wales.

We have appointed a designated teacher, who is responsible for promoting the educational achievement of looked-after children and previously looked-after children in line with [statutory guidance](#). The designated teacher has appropriate training and relevant qualifications and experience.

As part of their role, the designated teacher will:

- Work closely with the DSL to ensure that any safeguarding concerns regarding looked-after and previously looked-after children are quickly and effectively responded to;
- Work with virtual school heads to promote the educational achievement of looked-after and previously looked-after children, including discussing how pupil premium plus funding can be best used to support looked-after children and meet the needs identified in their personal education plans.

13. Vulnerable and Minority Groups

The Trust recognises that some children are particularly vulnerable to safeguarding risks and may require additional support and vigilance. These vulnerabilities may arise from a range of factors including discrimination, stereotyping, isolation, lack of trusted adults, or difficulties in disclosing abuse.

Children who may face increased safeguarding challenges include, but are not limited to:

- LGBT+ children and young people
- Children with special educational needs and/or disabilities (SEND)
- Children from minority ethnic, faith or cultural backgrounds
- Children of asylum seekers or refugees
- Children who are looked after or previously looked after
- Children living in poverty or experiencing material deprivation
- Children who are young carers
- Children with identified mental health needs

Staff will remain alert to these additional barriers and ensure that all safeguarding concerns are considered in the context of the child's individual needs. The Trust is committed to ensuring that these children are

protected and supported in line with our safeguarding duties and the Equality Act 2010.

LGBT+ Children and Young People

- The Trust recognises that LGBT+ pupils can face particular safeguarding risks, including bullying, prejudice-based harm, isolation, family rejection, exploitation and mental health challenges. Staff will:
- Be alert to the specific safeguarding risks affecting LGBT+ pupils
- Ensure that homophobic, biphobic, or transphobic bullying or language is not tolerated and is challenged consistently
- Provide safe spaces and trusted adults for LGBT+ pupils to seek support
- Handle disclosures sensitively, recognising that a pupil may not have shared their identity with their family
- Signpost pupils to appropriate internal and external sources of support

All staff will receive training to understand the specific safeguarding needs of LGBT+ pupils and to respond appropriately.

Pending publication of final DfE guidance, the Trust will handle any cases of gender questioning with sensitivity, ensuring safeguarding principles and the best interests of the child are paramount, while working closely with parents and statutory services.

14. Safeguarding against coercive religious conversion

Our schools are committed to ensuring a safe environment, free from coercion or pressure related to religious conversion whilst maintaining individual freedom of religion and belief.

Key Safeguarding Measures:

- **Preventing Coercion** – No student should be pressured or manipulated into changing religious beliefs where misinformation is the central theme.
- **Spiritual Support** – Faith-based guidance will be made available for students to discuss theological discourse if questions around this are being raised.
- **Safe Reporting** – Confidential channels will allow students, staff, and parents to report coercion concerns.
- **Respect for Religious Identity and Freedom** – Education will promote respect for all faiths and the right to individual freedom of belief.
- **Staff and Pupil awareness**– Staff and pupils will receive awareness to recognise and raise concern where there may be religious coercion from one religion to another.
- **Parental Engagement** – Schools will work with parents to raise awareness to help safeguard students' religious identity and beliefs.

Common Methods of Coercion:

- **Theological Arguments (Online or in person Influence)** – Framing one religion as superior or specifically " as the only and final truth to heaven", and all others false; being provided with misinformation about one's own religion, questioning another religions evidence to exist as a religion at all.
- **Manipulating Vulnerabilities** – Exploiting and encouraging conversion from within a relationship eg a boyfriend or girlfriend, or situations of grief.

Staff Actions:

- Provide awareness information; on an annual basis (as a part of safeguarding awareness) where pupils understand coercion strategies used and clear signposting to raise concerns.
- Observe, listen, and report any signs of coercion; this may result in behavioural changes, sudden change in religious appearance within weeks, social exclusion, consequences of not converting creating fear, guilt
- Provide pastoral faith support and safe spaces for open discussions with the aim to allow neutral theological discourse – noting that the pupil or student has a right to change religion
- Report to the Trust to arrange relevant faith pastoral support

15. Complaints and concerns about school safeguarding policies

15.1 Complaints against staff

Complaints against staff that are likely to require a child protection investigation will be handled in accordance with our procedures for dealing with allegations of abuse made against staff see [Appendix 3: Allegations of abuse made against staff](#)

15.2 Other complaints

All other concerns or complaints are addressed using the Concerns and Complaints Policy.

15.3 Whistleblowing

The Trust have a separate Whistleblowing Policy that is reviewed by the Executive Team and approved by the Trust Board. All new staff are required to review and adhere to this policy as part of their induction.

16. Record-keeping

We will hold records in line with our records retention schedule.

All safeguarding concerns, discussions, decisions made and the reasons for those decisions, must be recorded in writing. This should include instances where referrals were or were not made to another agency such as local authority children's social care or the Prevent programme, etc. If you are in any doubt about whether to record something, discuss it with the DSL.

Records will include:

- A clear and comprehensive summary of the concern
- Details of how the concern was followed up and resolved
- A note of any action taken, decisions reached and the outcome
- The rationale for the action taken including where a decision to refer, or not, to external agencies has been made.
- Concerns and referrals will be kept in a separate child protection file for each child.

Non-confidential records will be easily accessible and available. Confidential information and records will be held securely and only available to those who have a right or professional need to see them.

Safeguarding records relating to individual children will be retained for a reasonable period of time after they have left the school.

Safeguarding records which contain information about allegations of sexual abuse will be retained for the term of the inquiry. If a child for whom the school has, or has had, safeguarding concerns moves to another school, the DSL will ensure that their child protection file is forwarded as soon as possible, securely, and separately from the main pupil file.

To allow the new school/college to have support in place when the child arrives, this should be within:

- **5 days** for an in-year transfer, or within
- **The first 5 days** of the start of a new term

If the concerns are significant or complex, and/or social services are involved, the DSL will speak to the DSL of the receiving school and provide information to enable them to have time to make any necessary preparations to ensure the safety of the child.

In addition: Appendix 2 sets out our policy on record-keeping specifically with respect to recruitment and pre-appointment checks. Appendix 3 sets out our policy on record-keeping with respect to allegations of abuse made against staff.

17. Training

17.1 All staff

All staff members will undertake safeguarding and child protection training at induction, including on whistleblowing procedures and online safety, the roles and responsibilities in relation to filtering and monitoring, to ensure they understand the school's safeguarding systems and their responsibilities, and can identify signs of possible abuse, exploitation or neglect.

This training will be regularly updated at least annually and will:

- Be integrated, aligned and considered as part of the whole-school safeguarding approach and wider staff training, and curriculum planning
- Be in line with advice from the 3 safeguarding partners
- Have regard to the Teachers' Standards to support the expectation that all teachers:
 - Manage behaviour effectively to ensure a good and safe environment
 - Have a clear understanding of the needs of all pupils
- All staff will have training on the government's anti-radicalisation strategy, Prevent, to enable them to identify children at risk of becoming involved with or supporting terrorism and to challenge extremist ideas.
- Staff will also receive regular safeguarding and child protection updates (for example, through emails, e-bulletins and staff meetings) as required, but at least annually.
- Contractors who are provided through a private finance initiative (PFI) or similar contract will also receive safeguarding training.
- Volunteers will receive appropriate training, if applicable.

17.2 DSL and DDSL

The DSL and DDSL will undertake child protection and safeguarding training at least every 2 years.

In addition, they will update their knowledge and skills at regular intervals and at least annually (for example, through e-bulletins, meeting other DSLs, or taking time to read and digest safeguarding developments).

They will also undertake Prevent awareness training.

17.3 Trustees and Governors

All Trustees and Governors receive training about safeguarding (including online safety) annually, to make sure they have the knowledge and information. This is to make sure that they:

- Have the knowledge and information needed to perform their functions and understand their responsibilities, such as providing strategic challenge
- Can be assured that safeguarding policies and procedures are effective and support the school to deliver a robust whole-school approach to safeguarding

As the Chair of Trustees or Governors may be required to act as the 'case manager' in the event that an allegation of abuse is made against the CEO School Leader, they receive training in managing allegations for this purpose.

17.4 Recruitment – interview panels

To create a safe environment for our children and young people we have adopted the safer recruitment procedures, outlined in Keeping Children Safe in Education 2025.

We will ensure that at least one member of any recruitment panel has received safer recruitment training

17.5 Staff who have contact with pupils and families

All staff who have contact with children and families will have supervisions which will provide them with support, coaching and training, promote the interests of children and allow for confidential discussions of sensitive issues.

18. Monitoring and Review

Our Safeguarding and Child Protection Policy and procedures will be reviewed annually or sooner if required.

19. Links with other policies

This policy relates to safeguarding and child protection concerns and sits within a suite of other safeguarding policies. Our policy applies to all staff, governors and volunteers working in our school. This policy will operate in conjunction with other school policies including:

- Recruitment and Selection
- Whistleblowing
- Online safety
- First Aid
- Staff code of conduct
- Behaviour Policy and measures taken to prevent bullying, including cyberbullying, prejudice based and discriminatory bullying.
- SEND Code of Practice
- SEND Policy
- The Equalities Act 2010
- Concerns and Complaints
- Health and Safety
- Attendance

Appendix 1: Definitions of Abuse

The types of child abuse as defined in Keeping Children Safe in Education 2025, statutory guidance for schools and colleges;

Abuse

A form of maltreatment of a child. Somebody may abuse or neglect a child by inflicting harm or by failing to act to prevent harm. Children may be abused in a family or in an institutional or community setting by those known to them or, more rarely, by others. Abuse can take place wholly online, or technology may be used to facilitate offline abuse. Children may be abused by an adult or adults or by another child or children.

Physical abuse

A form of abuse which may involve hitting, shaking, throwing, poisoning, burning or scalding, drowning, suffocating or otherwise causing physical harm to a child. Physical harm may also be caused when a parent or carer fabricates the symptoms of, or deliberately induces, illness in a child.

Emotional abuse

The persistent emotional maltreatment of a child such as to cause severe and adverse effects on the child's emotional development. It may involve conveying to a child that they are worthless or unloved, inadequate, or valued only insofar as they meet the needs of another person. It may include not giving the child opportunities to express their views, deliberately silencing them or 'making fun' of what they say or how they communicate. It may feature age or developmentally inappropriate expectations being imposed on children.

These may include interactions that are beyond a child's developmental capability as well as overprotection and limitation of exploration and learning or preventing the child from participating in normal social interaction. It may involve seeing or hearing the ill-treatment of another. It may involve serious bullying (including cyberbullying), causing children frequently to feel frightened or in danger, or the exploitation or corruption of children. Some level of emotional abuse is involved in all types of maltreatment of a child, although it may occur alone.

Sexual abuse

Involves forcing or enticing a child or young person to take part in sexual activities, not necessarily involving a high level of violence, whether or not the child is aware of what is happening. The activities may involve physical contact, including assault by penetration (for example rape or oral sex) or non-penetrative acts such as masturbation, kissing, rubbing and touching outside of clothing. They may also include non-contact activities, such as involving children in looking at, or in the production of, sexual images, watching sexual activities, encouraging children to behave in sexually inappropriate ways, or grooming a child in preparation for abuse. Sexual abuse can take place online, and technology can be used to facilitate offline abuse.

Sexual abuse is not solely perpetrated by adult males. Women can also commit acts of sexual abuse, as can other children. The sexual abuse of children by other children is a specific safeguarding issue in education.

Neglect

Is the persistent failure to meet a child's basic physical and/or psychological needs and is likely to result in the serious impairment of the child's health or development. Neglect may occur during pregnancy as a result of maternal substance abuse. Once a child is born, neglect may involve a parent or carer failing to:

- Provide adequate food, clothing and shelter (including exclusion from home or abandonment);
- Protect a child from physical and emotional harm or danger;

- Ensure adequate supervision (including the use of inadequate care-givers); or
- Ensure access to appropriate medical care or treatment.

Domestic Abuse

Any incident or pattern of incidents of controlling, coercive, threatening behaviour, violence or abuse between those aged 16 or over who are, or have been, intimate partners or family members regardless of gender or sexuality.

Exposure to domestic abuse and/or violence can have a serious, long lasting emotional and psychological impact on children. In some cases, a child may blame themselves for the abuse or may have had to leave the family home as a result. Domestic abuse affecting young people can also occur within their personal relationships, as well as in the context of their home life.

Our school will make use of the advice and links available in Keeping Children Safe in Education 2025 (Annex A) to identify children who are affected by domestic abuse and how they can be helped.

Child-on-child Abuse

We believe that all children have a right to attend school and learn in a safe environment. Children should be free from harm by adults in the school and their peers.

We recognise that some children will sometimes negatively affect the learning and wellbeing of others and their behaviour will be dealt with under the school's relevant policy e.g. behaviour policy.

Our safeguarding/child protection policy includes:

- Procedures to minimise the risk of child-on-child abuse;
- Sets out how allegations of child-on-child abuse will be recorded, investigated and dealt with;
- How victims, perpetrators and any other child affected by of child-on-child abuse will be supported;
- A statement that abuse is abuse and will never be tolerated or passed off as “banter” “just having a laugh”, “part of growing up” or “boys will be boys”.
- Recognition of the gendered nature of child-on-child abuse, that all child-on-child abuse is unacceptable and will be taken seriously;
- The different forms of child-on-child abuse, such as:
 - Bullying (including cyberbullying, prejudice-based and discriminatory bullying)
 - Abuse in intimate personal relationships between children (also known as teenage relationship abuse)
 - Physical abuse which can include hitting, kicking, shaking, biting, hair pulling, or otherwise causing physical harm
 - Sexual violence and sexual harassment
 - Consensual and non-consensual sharing of nude and semi-nude images and/or videos
 - Causing someone to engage in sexual activity without consent, such as forcing someone to strip, touch themselves sexually, or to engage in sexual activity with a third party
 - Upskirting (which is a criminal offence) which typically involves taking a picture under a person's clothing without their permission, with the intention of viewing their genitals or buttocks to obtain sexual gratification, or cause the victim humiliation, distress, or alarm
 - Initiation/ hazing type violence and rituals

ALL allegations will be taken seriously, we have a zero tolerance approach to abuse, and it should never be tolerated or passed off as “banter” or “part of growing up” as this can lead to a culture of unacceptable behaviours and an unsafe environment for children (KCSIE 2025).

ALL allegations will be carefully considered, and all decisions will be made on a case by case basis in consultations with social care. Referral under safeguarding arrangements may be necessary, key specific considerations will include: The age, maturity and understanding of the children; and any disability or special needs of the children.

We recognise that even if there are no reported cases of child-on-child abuse, such abuse may still be taking place. All concerns must be passed onto the DSL or a deputy.

Appendix 2: Safer recruitment and DBS checks – policy and procedures

To make sure we recruit suitable people, we will ensure that those involved in the recruitment and employment of staff to work with children have received appropriate safer recruitment training.

We have put the following steps in place during our recruitment and selection process to ensure we are committed to safeguarding and promoting the welfare of children.

Advertising

When advertising roles, we will make clear:

- Our school's commitment to safeguarding and promoting the welfare of children
- That safeguarding checks will be undertaken
- The safeguarding requirements and responsibilities of the role, such as the extent to which the role will involve contact with children
- Whether or not the role is exempt from the Rehabilitation of Offenders Act 1974 and the amendments to the Exceptions Order 1975, 2013 and 2020. If the role is exempt, certain spent convictions and cautions are 'protected', so they do not need to be disclosed, and if they are disclosed, we cannot take them into account

Application forms

Our application forms will:

- Include a statement saying that it is an offence to apply for the role if an applicant is barred from engaging in regulated activity relevant to children (where the role involves this type of regulated activity)
- Include a copy of, or link to, our child protection and safeguarding policy and our policy on the employment of ex-offenders

Shortlisting

Our shortlisting process will involve at least 2 people and will:

- Consider any inconsistencies and look for gaps in employment and reasons given for them
- Explore all potential concerns

Once we have shortlisted candidates, we will ask shortlisted candidates to:

- Complete a self-declaration of their criminal record or any information that would make them unsuitable to work with children, so that they have the opportunity to share relevant information and discuss it at interview stage.
- The information we will ask for includes:
 - If they have a criminal history
 - Whether they are included on the barred list
 - Whether they are prohibited from teaching
 - Information about any criminal offences committed in any country in line with the law as applicable in England and Wales
 - Any relevant overseas information
- Sign a declaration confirming the information they have provided is true
- We will also consider carrying out an online search on shortlisted candidates to help identify any incidents or issues that are publicly available online.

Seeking references and checking employment history

We will obtain references before interview. Any concerns raised will be explored further with referees and taken up with the candidate at interview.

When seeking references we will:

- Not accept open references
- Liaise directly with referees and verify any information contained within references with the referees
- Ensure any references are from the candidate's current employer and completed by a senior person. Where the referee is school based, we will ask for the reference to be confirmed by the School Leader as accurate in respect to disciplinary investigations
- Obtain verification of the candidate's most recent relevant period of employment if they are not currently employed
- Secure a reference from the relevant employer from the last time the candidate worked with children if they are not currently working with children
- Compare the information on the application form with that in the reference and take up any inconsistencies with the candidate
- Resolve any concerns before any appointment is confirmed

Interview and selection

When interviewing candidates, we will:

- Probe any gaps in employment, or where the candidate has changed employment or location frequently, and ask candidates to explain this
- Explore any potential areas of concern to determine the candidate's suitability to work with children
- Record all information considered and decisions made

Pre-employment checks

We will record all information on the checks carried out in the school's single central record (SCR). Copies of these checks, where appropriate, will be held in individuals' personnel files. We follow requirements and best practice in retaining copies of these checks, as set out below.

New staff

All offers of appointment will be conditional until satisfactory completion of the necessary pre-employment checks. When appointing new staff, we will:

- Verify their identity
- Obtain (via the applicant) an enhanced Disclosure and Barring Service (DBS) certificate, including barred list information for those who will be engaging in regulated activity (see definition below). We will obtain the certificate before, or as soon as practicable after, appointment, including when using the DBS update service. We will not keep a copy of the certificate for longer than 6 months, but when the copy is destroyed we may still keep a record of the fact that vetting took place, the result of the check and recruitment decision taken
- Obtain a separate barred list check if they will start work in regulated activity before the DBS certificate is available;
- Verify their mental and physical fitness to carry out their work responsibilities;
- Verify their right to work in the UK. We will keep a copy of this verification for the duration of the member of staff's employment and for 2 years afterwards;
- Verify their professional qualifications, as appropriate;

- Ensure they are not subject to a prohibition order if they are employed to be a teacher;

Carry out further additional checks, as appropriate, on candidates who have lived or worked outside of the UK. Where available, these will include:

- For all staff, including teaching positions: [criminal records checks for overseas applicants](#)
- For teaching positions: obtaining a letter of professional standing from the professional regulating authority in the country where the applicant has worked
- Check that candidates taking up a management position* are not subject to a prohibition from management (section 128) direction made by the secretary of state

* Management positions are most likely to include, but are not limited to, School Leaders and members of the Senior Leadership team.

Primary phase

We will ensure that appropriate checks are carried out to ensure that individuals are not disqualified under the 2018 Childcare Disqualification Regulations and Childcare Act 2006. Where we take a decision that an individual falls outside of the scope of these regulations and we do not carry out such checks, we will retain a record of our assessment on the individual's personnel file. This will include our evaluation of any risks and control measures put in place, and any advice sought.

We will ask for written information about previous employment history and check that information is not contradictory or incomplete. We will seek references on all short-listed candidates, including internal candidates, before interview. We will scrutinise these and resolve any concerns before confirming appointments. The references requested will ask specific questions about the suitability of the applicant to work with children.

Regulated activity means a person who will be:

- Responsible, on a regular basis in a school or college, for teaching, training, instructing, caring for or supervising children; or
- Carrying out paid, or unsupervised unpaid, work regularly in a school or college where that work provides an opportunity for contact with children; or
- Engaging in intimate or personal care or overnight activity, even if this happens only once and regardless of whether they are supervised or not

Existing staff

If we have concerns about an existing member of staff's suitability to work with children, we will carry out all the relevant checks as if the individual was a new member of staff. We will also do this if an individual moves from a post that is not regulated activity to one that is.

We will refer to the DBS anyone who has harmed, or poses a risk of harm, to a child or vulnerable adult where:

- We believe the individual has engaged in [relevant conduct](#); or
- The individual has received a caution or conviction for a relevant offence, or there is reason to believe the individual has committed a listed relevant offence, under the [Safeguarding Vulnerable Groups Act 2006 \(Prescribed Criteria and Miscellaneous Provisions\) Regulations 2009](#); or
- The 'harm test' is satisfied in respect of the individual (i.e. they may harm a child or vulnerable adult or put them at risk of harm); and

- The individual has been removed from working in regulated activity (paid or unpaid) or would have been removed if they had not left.

Agency and third-party staff

We will obtain written notification from any agency or third-party organisation that it has carried out the necessary safer recruitment checks that we would otherwise perform. We will also check that the person presenting themselves for work is the same person on whom the checks have been made.

Contractors

We will ensure that any contractor, or any employee of the contractor, who is to work at the school has had the appropriate level of DBS check (this includes contractors who are provided through a PFI or similar contract). This will be:

- An enhanced DBS check with barred list information for contractors engaging in regulated activity;
- An enhanced DBS check, not including barred list information, for all other contractors who are not in regulated activity but whose work provides them with an opportunity for regular contact with children.
- We will obtain the DBS check for self-employed contractors. We will not keep copies of such checks for longer than 6 months. Contractors who have not had any checks will not be allowed to work unsupervised or engage in regulated activity under any circumstances. We will check the identity of all contractors and their staff on arrival at the school.

Primary Phase:

For self-employed contractors such as music teachers or sports coaches, we will ensure that appropriate checks are carried out to ensure that individuals are not disqualified under the 2018 Childcare Disqualification Regulations and Childcare Act 2006. Where we decide that an individual falls outside of the scope of these regulations and we do not carry out such checks, we will retain a record of our assessment. This will include our evaluation of any risks and control measures put in place, and any advice sought.

Trainee/student teachers

Where applicants for initial teacher training are salaried by us, we will ensure that all necessary checks are carried out. Where trainee teachers are fee-funded, we will obtain written confirmation from the training provider that necessary checks have been carried out and that the trainee has been judged by the provider to be suitable to work with children.

Primary Phase:

In both cases, this includes checks to ensure that individuals are not disqualified under the 2018 Childcare Disqualification Regulations and Childcare Act 2006.

Volunteers

We will:

- Never leave an unchecked volunteer unsupervised or allow them to work in regulated activity
- Obtain an enhanced DBS check with barred list information for all volunteers who are new to working in regulated activity

- Carry out a risk assessment when deciding whether to seek an enhanced DBS check without barred list information for any volunteers not engaging in regulated activity. We will retain a record of this risk assessment

Primary Phase:

- Ensure that appropriate checks are carried out to ensure that individuals are not disqualified under the 2018 Childcare Disqualification Regulations and Childcare Act 2006. Where we decide that an individual falls outside of the scope of these regulations and we do not carry out such checks, we will retain a record of our assessment. This will include our evaluation of any risks and control measures put in place, and any advice sought.

Governors, Trustees and Members

All Trustees and Governors will have an enhanced DBS check without barred list information. They will have an enhanced DBS check with barred list information if working in regulated activity.

The Chair of the Trust Board will have their DBS check countersigned by the secretary of state. All proprietors, trustees, local governors and members will also have the following checks:

- A section 128 check (to check prohibition on participation in management under [section 128 of the Education and Skills Act 2008](#)).
- Identity;
- Right to work in the UK;
- Other checks deemed necessary if they have lived or worked outside the UK.

Staff working in alternative provision settings

Where we place a pupil with an alternative provision provider, we obtain written confirmation from the provider that they have carried out the appropriate safeguarding checks on individuals working there that we would otherwise perform.

Adults who supervise pupils on work experience

When organising work experience, we will ensure that policies and procedures are in place to protect children from harm.

We will also consider whether it is necessary for barred list checks to be carried out on the individuals who supervise a pupil under 16 on work experience. This will depend on the specific circumstances of the work experience, including the nature of the supervision, the frequency of the activity being supervised, and whether the work is regulated activity.

Pupils staying with host families

Where the school makes arrangements for pupils to be provided with care and accommodation by a host family to which they are not related (for example, during a foreign exchange visit), we will request enhanced DBS checks with barred list information on those people.

Where the school is organising such hosting arrangements overseas and host families cannot be checked in the same way, we will work with our partner schools abroad to ensure that similar assurances are undertaken prior to the visit.

Appendix 3: Allegations of abuse made against staff (including low level concerns)

Section 1: Allegations that may meet the harm threshold

This section of this policy applies to all cases in which it is alleged that a current member of staff, including a supply teacher, volunteer, or contractor has:

- Behaved in a way that has harmed a child, or may have harmed a child; or
- Possibly committed a criminal offence against or related to a child; or
- Behaved towards a child or children in a way that indicates he or she may pose a risk of harm to children; or
- Behaved or may have behaved in a way that indicates they may not be suitable to work with children.

If we are in any doubt as to whether a concern meets the harm threshold, we will consult our local authority designated officer (LADO).

We will deal with any allegation of abuse quickly, in a fair and consistent way that provides effective child protection while also supporting the individual who is the subject of the allegation.

A 'case manager' will lead any investigation. The case manager will be identified at the earliest opportunity.

Our procedures for dealing with allegations will be applied with common sense and judgement.

Suspension of the accused until the case is resolved

Suspension will not be the default position, and will only be considered in cases where there is reason to suspect that a child or other children is/are at risk of harm, or the case is so serious that it might be grounds for dismissal. In such cases, we will only suspend an individual if we have considered all other options available and there is no reasonable alternative.

Based on an assessment of risk, we will consider alternatives such as:

- Redeployment within the school so that the individual does not have direct contact with the child or children concerned.
- Providing an assistant to be present when the individual has contact with children.
- Redeploying the individual to alternative work in the school so that they do not have unsupervised access to children.
- Moving the child or children to classes where they will not come into contact with the individual, making it clear that this is not a punishment and parents have been consulted.
- Temporarily redeploying the individual to another role in a different location, for example to an alternative school or other work for Nishkam School Trust.
- If in doubt, the case manager will seek views from the school's personnel adviser and the designated officer at the local authority, as well as the police and children's social care where they have been involved.

Definitions for outcomes of allegation investigations

- **Substantiated:** there is sufficient evidence to prove the allegation.
- **Malicious:** there is sufficient evidence to disprove the allegation and there has been a deliberate act to deceive.
- **False:** there is sufficient evidence to disprove the allegation.

- **Unsubstantiated:** there is insufficient evidence to either prove or disprove the allegation (this does not imply
- guilt or innocence).
- **Unfounded:** to reflect cases where there is no evidence or proper basis which supports the allegation being made.

Procedure for dealing with allegations

In the event of an allegation that meets the criteria above, the School Leader or Chair of Governors (where the School Leader is the subject of the allegation) – the ‘case manager’ – will take the following steps:

- Conduct basic enquiries in line with local procedures to establish the facts to help determine whether there is any foundation to the allegation before carrying on with the steps below
- Discuss the allegation with the designated officer at the local authority. This is to consider the nature, content and context of the allegation and agree a course of action, including whether further enquiries are necessary to enable a decision on how to proceed, and whether it is necessary to involve the police and/or local authority children’s social care services. (The case manager may, on occasion, consider it necessary to involve the police before consulting the designated officer – for example, if the accused individual is deemed to be an immediate risk to children or there is evidence of a possible criminal offence. In such cases, the case manager will notify the designated officer as soon as practicably possible after contacting the police)
- Inform the accused individual of the concerns or allegations and likely course of action as soon as possible after speaking to the designated officer (and the police or children’s social care services, where necessary). Where the police and/or children’s social care services are involved, the case manager will only share such information with the individual as has been agreed with those agencies
- Where appropriate (in the circumstances described above), carefully consider whether suspension of the individual from contact with children at the school is justified or whether alternative arrangements such as those outlined above can be put in place. Advice will be sought from the designated officer, police and/or local authority children’s social care services, as appropriate
- Where the case manager is concerned about the welfare of other children in the community or the individual’s family, they will discuss these concerns with the DSL and make a risk assessment of the situation. If necessary, the DSL may make a referral to local authority children’s social care
- **If immediate suspension is considered necessary**, agree and record the rationale for this with the designated officer. The record will include information about the alternatives to suspension that have been considered, and why they were rejected. Written confirmation of the suspension will be provided to the individual facing the allegation or concern within 1 working day, and the individual will be given a named contact at the school and their contact details
- If it is decided that no further action is to be taken in regard to the subject of the allegation or concern, record this decision and the justification for it and agree with the designated officer what information should be put in writing to the individual and by whom, as well as what action should follow both in respect of the individual and those who made the initial allegation
- If it is decided that further action is needed, take steps as agreed with the designated officer to initiate the appropriate action in school and/or liaise with the police and/or local authority children’s social care services as appropriate
- Provide effective support for the individual facing the allegation or concern, including appointing a named representative to keep them informed of the progress of the case and considering what other support

is appropriate.

- Inform the parents or carers of the child/children involved about the allegation as soon as possible if they do not already know (following agreement with local authority children's social care services and/or the police, if applicable). The case manager will also inform the parents or carers of the requirement to maintain confidentiality about any allegations made against teachers (where this applies) while investigations are ongoing. Any parent or carer who wishes to have the confidentiality restrictions removed in respect of a teacher will be advised to seek legal advice
- Keep the parents or carers of the child/children involved informed of the progress of the case (only in relation to their child – no information will be shared regarding the staff member)
- In line with the requirements set out in KCSIE 2025, make a referral to the DBS where it is thought that the individual facing the allegation or concern has engaged in conduct that harmed or is likely to harm a child, or if the individual otherwise poses a risk of harm to a child

EYFS:

We will inform Ofsted of any allegations of serious harm or abuse by any person living, working, or looking after children at the premises (whether the allegations relate to harm or abuse committed on the premises or elsewhere), and any action taken in respect of the allegations. This notification will be made as soon as reasonably possible and always within 14 days of the allegations being made.

If the school is made aware that the secretary of state has made an interim prohibition order in respect of an individual, we will immediately suspend that individual from teaching, pending the findings of the investigation by the Teaching Regulation Agency.

Where the police are involved, wherever possible the Trust will ask the police at the start of the investigation to obtain consent from the individuals involved to share their statements and evidence for use in the school's disciplinary process, should this be required at a later point.

Additional considerations for supply staff

- If there are concerns or an allegation is made against someone not directly employed by the school, such as supply staff provided by an agency, we will take the actions below in addition to our standard procedures
- We will not decide to stop using a supply teacher due to safeguarding concerns without finding out the facts and liaising with our Local Authority Designated Officer (LADO) to determine a suitable outcome
- The governing board will discuss with the agency whether it is appropriate to suspend the supply teacher, or redeploy them to another part of the school, while the school carries out the investigation;
- We will involve the agency fully, but the school will take the lead in collecting the necessary information and providing it to the local authority designated officer as required
- We will address issues such as information sharing, to ensure any previous concerns or allegations known to the agency are taken into account (we will do this, for example, as part of the allegations management meeting or by liaising directly with the agency where necessary)
- When using an agency, we will inform them of our process for managing allegations, and keep them updated about our policies as necessary, and will invite the agency's HR manager or equivalent to meetings as appropriate

Timescales

- We will deal with all allegations as quickly and effectively as possible and will endeavour to comply with the following timescales, where reasonably practicable
- Any cases where it is clear immediately that the allegation is unsubstantiated or malicious will be resolved within 1 week
- If the nature of an allegation does not require formal disciplinary action, we will institute appropriate action within 3 working days
- If a disciplinary hearing is required and can be held without further investigation, we will hold this within 15 working days
- However, these are objectives only and where they are not met, we will endeavour to take the required action as soon as possible thereafter.

Specific actions

Action following a criminal investigation or prosecution

The case manager will discuss with the local authority's designated officer whether any further action, including disciplinary action, is appropriate and, if so, how to proceed, taking into account information provided by the police and/or children's social care services.

Conclusion of a case where the allegation is substantiated

If the allegation is substantiated and the individual is dismissed or the school ceases to use their services, or the individual resigns or otherwise ceases to provide their services, the trust will make a referral to the DBS for consideration of whether inclusion on the barred lists is required. As set out in KCSIE 2025, there is a legal requirement for employers to make a referral to the DBS where they consider an individual has engaged in conduct that harmed (or is likely to harm) a child

If the individual concerned is a member of teaching staff, the case manager and personnel adviser will discuss with the designated officer whether to refer the matter to the Teaching Regulation Agency to consider prohibiting the individual from teaching.

Individuals returning to work after suspension

If a report is:

- Determined to be unsubstantiated, unfounded, false or malicious, the DSL will consider the appropriate next steps. If they consider that the child and/or person who made the allegation is in need of help, or the allegation may have been a cry for help, a referral to children's social care may be appropriate
- Shown to be deliberately invented, or malicious, the school will consider whether any disciplinary action is appropriate against the individual(s) who made it

Unsubstantiated or malicious allegations

If an allegation is:

- Determined to be unsubstantiated, unfounded, false or malicious, the LADO and case manager will consider the appropriate next steps. If they consider that the child and/or person who made the allegation is in need of help, or the allegation may have been a cry for help, a referral to children's social care may be appropriate
- Shown to be deliberately invented, or malicious, the school will consider whether any disciplinary action is appropriate against the individual(s) who made it

Confidentiality

- The school will make every effort to maintain confidentiality and guard against unwanted publicity while an allegation is being investigated or considered.
- The case manager will take advice from the local authority's designated officer, police and children's social care services, as appropriate, to agree:
 - Who needs to know about the allegation and what information can be shared.
 - How to manage speculation, leaks and gossip, including how to make parents or carers of a child/children involved aware of their obligations with respect to confidentiality.
 - What, if any, information can be reasonably given to the wider community to reduce speculation.
 - How to manage press interest if, and when, it arises.

Record-keeping

The case manager will maintain clear records about any case where the allegation or concern meets the criteria above and store them on the individual's confidential personnel file for the duration of the case. Such records will include:

- A clear and comprehensive summary of the allegation.
- Details of how the allegation was followed up and resolved.
- Notes of any action taken and decisions reached (and justification for these, as stated above).
- A declaration on whether the information will be referred to in any future reference
- In these cases, the school will provide a copy to the individual, in agreement with children's social care or the police as appropriate.
- Where records contain information about allegations of sexual abuse, we will preserve these for the Independent Inquiry into Child Sexual Abuse (IICSA), for the term of the inquiry. We will retain all other records at least until the individual has reached normal pension age, or for 10 years from the date of the allegation if that is longer.
- The records of any allegation that is found to be malicious will be deleted from the individual's personnel file.

References

When providing employer references, we will not refer to any allegation that has been proven to be false, unsubstantiated or malicious, or any history of allegations where all such allegations have been proven to be false, unsubstantiated or malicious.

Learning lessons

After any cases where the allegations are *substantiated*, we will review the circumstances of the case with the local authority's designated officer to determine whether there are any improvements that we can make to the school's procedures or practice to help prevent similar events in the future.

This will include consideration of (as applicable):

- Issues arising from the decision to suspend the member of staff
- The duration of the suspension
- Whether or not the suspension was justified
- The use of suspension when the individual is subsequently reinstated. We will consider how future investigations of a similar nature could be carried out without suspending the individual

For all other cases, the case manager will consider the facts and determine whether any improvements can be made.

Non-recent allegations

- Abuse can be reported, no matter how long ago it happened.
- We will report any non-recent allegations made by a child to the LADO in line with our local authority's procedures for dealing with non-recent allegations.
- Where an adult makes an allegation to the school that they were abused as a child, we will advise the individual to report the allegation to the police.

Section 2: Concerns that do not meet the harm threshold

This section applies to all concerns (including allegations) about members of staff, including supply teachers, volunteers and contractors, which do not meet the harm threshold set out in section 1 above.

Concerns may arise through, for example:

- Suspicion
- Complaint
- Disclosure made by a child, parent or other adult within or outside the school
- Pre-employment vetting checks

We recognise the importance of responding to and dealing with any concerns in a timely manner to safeguard the welfare of children.

Definition of low-level concerns

The term 'low-level' concern is any concern – no matter how small – that an adult working in or on behalf of the school may have acted in a way that:

- Is inconsistent with the staff code of conduct, including inappropriate conduct outside of work, **and**
- Does not meet the allegations threshold or is otherwise not considered serious enough to consider a referral to the designated officer at the local authority

Examples of such behaviour could include, but are not limited to:

- Being overly friendly with children
- Having favourites
- Taking photographs of children on their mobile phone
- Engaging with a child on a one-to-one basis in a secluded area or behind a closed door
- Using inappropriate sexualised, intimidating or offensive language
- Humiliating pupils

Sharing low-level concerns

We recognise the importance of creating a culture of openness, trust and transparency to encourage all staff to share low-level concerns so that they can be addressed appropriately and to create a culture where the school values and expectations are lived, monitored and reinforced constantly by all. All low level concerns should be reported to the DSL, DDSL or School Leader.

We will create this culture by:

- Ensuring staff are clear about what appropriate behaviour is, and are confident in distinguishing expected and appropriate behaviour from concerning, problematic or inappropriate behaviour, in themselves and others
- Empowering staff to share any low-level concerns as per section 7.7 of this policy
- Empowering staff to self-refer
- Addressing unprofessional behaviour and supporting the individual to correct it at an early stage
- Providing a responsive, sensitive and proportionate handling of such concerns when they are raised
- Helping to identify any weakness in the school's safeguarding system

Responding to low-level concerns

If the concern is raised via a third party, the School Leader will collect evidence where necessary by speaking:

- Directly to the person who raised the concern, unless it has been raised anonymously
- To the individual involved and any witnesses

The School Leader will use the information collected to categorise the type of behaviour and determine any further action, in line with the school's Staff Code of Conduct. The School Leader will be the ultimate decision-maker in respect of all low-level concerns, though they may wish to collaborate with the DSL.

Record keeping

All safeguarding concerns, discussions, decisions made and the reasons for those decisions must be recorded in writing. Staff must record all concerns on school's MIS (Management Information System) providing a clear and comprehensive summary of that concern. Records will be:

- Kept confidential, held securely and comply with the DPA 2018 and UK GDPR
- Reviewed so that potential patterns of concerning, problematic or inappropriate behaviour can be identified. Where a pattern of such behaviour is identified, we will decide on a course of action, either through our disciplinary procedures or, where a pattern of behaviour moves from a concern to meeting the harms threshold as described in section I of this appendix, we will refer it to the designated officer at the local authority
- Retained at least until the individual leaves employment at the school
- Where a low-level concern relates to a supply teacher or contractor, we will notify the individual's employer, so any potential patterns of inappropriate behaviour can be identified.

References

We will not include low-level concerns in references unless:

- The concern (or group of concerns) has met the threshold for referral to the designated officer at the local authority and is found to be substantiated; and/or
- The concern (or group of concerns) relates to issues which would ordinarily be included in a reference, such as misconduct or poor performance

Appendix 4: Specific safeguarding issues

Assessing adult-involved nude and semi-nude sharing incidents

This section is based on annex A of the UK Council of Internet Safety's [advice for education settings](#).

All adult-involved nude and semi-nude image sharing incidents are child sexual abuse offences and must immediately be referred to police/social care. However, as adult-involved incidents can present as child-on-child nude/semi-nude sharing, it may be difficult to initially assess adult involvement.

There are two types of common adult-involved incidents: sexually motivated incidents and financially motivated incidents.

Sexually motivated incidents

In this type of incident, an adult offender obtains nude and semi-nudes directly from a child or young person using online platforms.

To make initial contact, the offender may present as themselves or use a false identity on the platform, sometimes posing as a child or young person to encourage a response and build trust. The offender often grooms the child or young person on social media, in chatrooms or on gaming platforms, and may then move the conversation to a private messaging app or an end-to-end encrypted (E2EE) environment where a request for a nude or semi-nude is made. To encourage the child or young person to create and share nude or semi-nude, the offender may share pornography or child sexual abuse material (images of other young people), including AI-generated material.

Once a child or young person shares a nude or semi-nude, an offender may blackmail the child or young person into sending more images by threatening to release them online and/or send them to friends and family.

Potential signs of adult-involved grooming and coercion can include the child or young person being:

- Contacted by an online account that they do not know but appears to be another child or young person
- Quickly engaged in sexually explicit communications, which may include the offender sharing unsolicited images
- Moved from a public to a private/E2EE platform
- Coerced/pressured into doing sexual things, including creating nudes and semi-nudes
- Offered something of value such as money or gaming credits
- Threatened or blackmailed into carrying out further sexual activity. This may follow the child or young person initially sharing the image or the offender sharing a digitally manipulated image of the child or young person to extort 'real' images

Financially motivated incidents

Financially motivated sexual extortion (often known as 'sextortion') is an adult-involved incident in which an adult offender (or offenders) threatens to release nudes or semi-nudes of a child or young person unless they pay money or do something else to benefit them.

Unlike other adult-involved incidents, financially motivated sexual extortion is usually carried out by offenders working in sophisticated organised crime groups (OCGs) overseas and are only motivated by profit. Adults are usually targeted by these groups too.

Offenders will often use a false identity, sometimes posing as a child or young person, or hack another young person's account to make initial contact. To financially blackmail the child or young person, they may:

- Groom or coerce the child or young person into sending nudes or semi-nudes and financially blackmail them
- Use images that have been stolen from the child or young person taken through hacking their account
- Use digitally manipulated images, including AI-generated images, of the child or young person

The offender may demand payment or the use of the victim's bank account for the purposes of money laundering.

Potential signs of adult-involved financially motivated sexual extortion can include the child or young person being:

- Contacted by an online account that they do not know but appears to be another child or young person. They may be contacted by a hacked account of a child or young person
- Quickly engaged in sexually explicit communications which may include the offender sharing an image first
- Moved from a public to a private/E2EE platform
- Pressured into taking nudes or semi-nudes
- Told they have been hacked and they have access to their images, personal information and contacts
- Blackmailed into sending money or sharing bank account details after sharing an image or the offender sharing hacked or digitally manipulated images of the child or young person

Children who are absent from Education

A child being absent from education, particularly repeatedly, can be a warning sign of a range of safeguarding issues. This might include abuse or neglect, such as sexual abuse or exploitation or child criminal exploitation, or issues such as mental health problems, substance abuse, radicalisation, FGM or forced marriage.

There are many circumstances where a child may become missing from education, but some children are particularly at risk. These include children who:

- Are at risk of harm or neglect;
- Are at risk of forced marriage or FGM;
- Come from Gypsy, Roma, or Traveller families;
- Come from the families of service personnel;
- Go missing or run away from home or care;
- Are supervised by the youth justice system;
- Cease to attend a school;
- Come from new migrant families.

We will follow our procedures for unauthorised absence and for dealing with children who go missing from education, particularly on repeat occasions, to help identify the risk of abuse, exploitation and neglect, including sexual exploitation, and to help prevent the risks of going missing in future. This includes informing the local authority if a child leaves the school without a new school being named, and adhering to requirements with respect to sharing information with the local authority, when applicable, when removing a child's name from the admission register at non-standard transition points.

Staff will be trained in signs to look out for and the individual triggers to be aware of when considering the risks of potential safeguarding concerns which may be related to being missing, such as travelling to conflict zones, FGM and forced marriage.

If a staff member suspects that a child is suffering from harm or neglect, we will follow local child protection procedures, including with respect to making reasonable enquiries. We will make an immediate referral to the local authority children's social care team, and the police, if the child is suffering or likely to suffer from harm, or in immediate danger.

Child Criminal Exploitation (CCE)

CCE is a form of abuse where an individual or group takes advantage of an imbalance of power to coerce, control, manipulate or deceive a child into criminal activity. It may involve an exchange for something the victim needs or wants, and/or for the financial or other advantage of the perpetrator or facilitator, and/or through violence or the threat of violence.

The abuse can be perpetrated by males or females, and children or adults. It can be a one-off occurrence or a series of incidents over time and range from opportunistic to complex organised abuse.

The victim can be exploited even when the activity appears to be consensual. It does not always involve physical contact and can happen online. For example, young people may be forced to work in cannabis factories, coerced into moving drugs or money across the country (county lines), forced to shoplift or pickpocket, or to threaten other young people.

Whilst age may be the most obvious, this power imbalance can also be due to a range of other factors including gender, cognitive ability, physical strength, status, and access to economic or other resources.

- Indicators of CCE can include a child:
- Appearing with unexplained gifts or new possessions
- Associating with other young people involved in exploitation
- Suffering from changes in emotional wellbeing
- Misusing drugs and alcohol
- Going missing for periods of time or regularly coming home late
- Regularly missing school or education
- Not taking part in education

If a member of staff suspects CCE, they will discuss this with the DSL. The DSL will trigger the local safeguarding procedures, including a referral to the local authority's children's social care team and the police, if appropriate.

Child Sexual Exploitation (CSE)

CSE is a form of child sexual abuse where an individual or group takes advantage of an imbalance of power to coerce, manipulate or deceive a child into sexual activity. It may involve an exchange for something the victim needs or wants and/or for the financial advantage or increased status of the perpetrator or facilitator. It may, or may not, be accompanied by violence or threats of violence.

The abuse can be perpetrated by males or females, and children or adults. It can be a one-off occurrence or a series of incidents over time and range from opportunistic to complex organised abuse.

The victim can be exploited even when the activity appears to be consensual. Children or young people who are being sexually exploited may not understand that they are being abused. They often trust their abuser and may be tricked into believing they are in a loving, consensual relationship.

CSE can include both physical contact (penetrative and non-penetrative acts) and non-contact sexual activity. It can also happen online. For example, young people may be persuaded or forced to share sexually explicit images of themselves, have sexual conversations by text, or take part in sexual activities using a webcam. CSE

may also occur without the victim's immediate knowledge, for example through others copying videos or images.

In addition to the CCE indicators above, indicators of CSE can include a child:

- Having an older boyfriend or girlfriend
- Suffering from sexually transmitted infections or becoming pregnant

If a member of staff suspects CSE, they will discuss this with the DSL. The DSL will trigger the local safeguarding procedures, including a referral to the local authority's children's social care team and the police, if appropriate.

Child-on-child abuse

Child-on-child abuse is when children abuse other children. This type of abuse can take place inside and outside of school. It can also take place both face-to-face and online, and can occur simultaneously between the 2.

Our school has a zero-tolerance approach to sexual violence and sexual harassment. We recognise that even if there are there no reports, that doesn't mean that this kind of abuse isn't happening.

Child-on-child abuse is most likely to include, but may not be limited to:

- Bullying (including cyber-bullying, prejudice-based and discriminatory bullying)
- Abuse in intimate personal relationships between children (this is sometimes known as 'teenage relationship abuse')
- Physical abuse such as hitting, kicking, shaking, biting, hair pulling, or otherwise causing physical harm (this may include an online element which facilitates, threatens and/or encourages physical abuse)
- Sexual violence, such as rape, assault by penetration and sexual assault (this may include an online element which facilitates, threatens and/or encourages sexual violence)
- Sexual harassment, such as sexual comments, remarks, jokes and online sexual harassment, which may be standalone or part of a broader pattern of abuse
- Causing someone to engage in sexual activity without consent, such as forcing someone to strip, touch themselves sexually, or to engage in sexual activity with a third party
- Consensual and non-consensual sharing of nude and semi-nude images and/or videos (also known as sexting or youth produced sexual imagery)
- Upskirting (which is a criminal offence), which typically involves taking a picture under a person's clothing without their permission, with the intention of viewing their genitals or buttocks to obtain sexual gratification, or cause the victim humiliation, distress or alarm
- Initiation/hazing type violence and rituals (this could include activities involving harassment, abuse or humiliation used as a way of initiating a person into a group and may also include an online element)

Where children abuse their peers online, this can take the form of, for example, abusive, harassing, and misogynistic messages; the non-consensual sharing of indecent images, especially around chat groups; and the sharing of abusive images and pornography, to those who don't want to receive such content. All staff should take reports of online harmful behaviour seriously and report them according to the school procedures.

If staff have any concerns about child-on-child abuse, or a child makes a report to them, they will follow the procedures set out in section 7 of this policy, as appropriate. In particular, section 7.8 and 7.9 set out more detail about our school's approach to this type of abuse.

When considering instances of harmful sexual behaviour between children, we will consider their ages and stages of development. We recognise that children displaying harmful sexual behaviour have often experienced their own abuse and trauma, and will offer them appropriate support.

Domestic abuse

Children can witness and be adversely affected by domestic abuse and/or violence at home where it occurs between family members. In some cases, a child may blame themselves for the abuse or may have had to leave the family home as a result. Children can be victims of domestic abuse by witnessing it or experiencing it within their own intimate relationships.

Types of domestic abuse include intimate partner violence, abuse by family members, teenage relationship abuse (abuse in intimate personal relationships between children) and child/adolescent to parent violence and abuse. It can be physical, sexual, financial, psychological or emotional. It can also include ill treatment that isn't physical, as well as witnessing the ill treatment of others. This can be particularly relevant, for example, in relation to the impact on children of all forms of domestic abuse, including where they see, hear or experience its effects.

Anyone can be a victim of domestic abuse, regardless of gender, age, ethnicity, socioeconomic status, sexuality or background, and domestic abuse can take place inside or outside of the home. Children who witness domestic abuse are also victims.

Older children may also experience and/or be the perpetrators of domestic abuse and/or violence in their own personal relationships. This can include sexual harassment.

Exposure to domestic abuse and/or violence can have a serious, long-lasting emotional and psychological impact on children and affect their health, wellbeing, development and ability to learn.

If police are called to an incident of domestic abuse and any children in the household have experienced the incident, the police will inform (known as Operation Encompass) the key adult in school (usually the designated safeguarding lead) before the child or children arrive at school the following day.

The DSL will provide support according to the child's needs and update records about their circumstances.

Operation Encompass

Operation Encompass operates in all police forces across England. It helps police and schools work together to provide emotional and practical help to children. The system ensures that when the police are called to an incident of domestic abuse, where there are children in the household who have experienced the domestic incident, the police will inform the key adult (usually the designated safeguarding lead (or a deputy)) in school before the child or children arrive at school the following day. This ensures that the school has up to date relevant information about the child's circumstances and can enable immediate support to be put in place, according to the child's needs. Operation Encompass does not replace statutory safeguarding procedures. Where appropriate, the police and/or schools should make a referral to local authority children's social care if they are concerned about a child's welfare. More information about the scheme and how schools can become involved is available on the Operation Encompass website <https://www.operationencompass.org/>

Homelessness

Being homeless or being at risk of becoming homeless presents a real risk to a pupil's welfare. When required our DSL will obtain contact details and know referral routes in to the Local Housing Authority so they can raise/progress concerns at the earliest opportunity.

Where a child has been harmed or is at risk of harm, the DSL will also make a referral to children's social care.

So called 'Honour based' abuse (Including FGM and forced marriage)

So-called 'honour-based' abuse (HBA) encompasses crimes which have been committed to protect or defend the honour of the family and/or the community, including Female Genital Mutilation (FGM), marriage, and practices such as breast ironing.

Abuse committed in the context of preserving "honour" often involves a wider network of family or community pressure and can include multiple perpetrators. Our staff will be aware of this dynamic and additional risk factors when deciding what form of safeguarding action to take. All forms of honour based abuse are abuse (regardless of the motivation) and should be handled and escalated as such.

If our staff have any concerns regarding a child that might be at risk of honour-based abuse or who has suffered from honour based abuse they will speak to the DSL. As appropriate the DSL will activate local safeguarding partner arrangements procedures by contacting the police and or social care.

All forms of HBA are abuse and will be handled and escalated as such. All staff will be alert to the possibility of a child being at risk of HBA or already having suffered it. If staff have a concern, they will speak to the DSL, who will activate local safeguarding procedures.

Female Genital Mutilation (FGM)

The DSL will make sure that staff have access to appropriate training to equip them to be alert to children affected by FGM or at risk of FGM.

Section 7.3 of this policy sets out the procedures to be followed if a staff member discovers that an act of FGM appears to have been carried out or suspects that a pupil is at risk of FGM.

Indicators that FGM has already occurred include:

- A pupil confiding in a professional that FGM has taken place
- A mother/family member disclosing that FGM has been carried out
- A family/pupil already being known to social services in relation to other safeguarding issues
- A girl:
 - Having difficulty walking, sitting or standing, or looking uncomfortable
 - Finding it hard to sit still for long periods of time (where this was not a problem previously)
 - Spending longer than normal in the bathroom or toilet due to difficulties urinating
 - Having frequent urinary, menstrual or stomach problems
 - Avoiding physical exercise or missing PE
 - Being repeatedly absent from school, or absent for a prolonged period
 - Demonstrating increased emotional and psychological needs – for example, withdrawal or depression, or significant change in behaviour
 - Being reluctant to undergo any medical examinations
 - Asking for help, but not being explicit about the problem
 - Talking about pain or discomfort between her legs

Potential signs that a pupil may be at risk of FGM include:

- The girl's family having a history of practising FGM (this is the biggest risk factor to consider)
- FGM being known to be practised in the girl's community or country of origin
- A parent or family member expressing concern that FGM may be carried out
- A family not engaging with professionals (health, education or other) or already being known to social care in relation to other safeguarding issues

- A girl:
 - Having a mother, older sibling or cousin who has undergone FGM
 - Having limited level of integration within UK society
 - Confiding to a professional that she is to have a “special procedure” or to attend a special occasion to “become a woman”
 - Talking about a long holiday to her country of origin or another country where the practice is prevalent, or parents/carers stating that they or a relative will take the girl out of the country for a prolonged period
 - Requesting help from a teacher or another adult because she is aware or suspects that she is at immediate risk of FGM
 - Talking about FGM in conversation – for example, a girl may tell other children about it (although it is important to take into account the context of the discussion)
 - Being unexpectedly absent from school
 - Having sections missing from her ‘red book’ (child health record) and/or attending a travel clinic or equivalent for vaccinations/anti-malarial medication

The above indicators and risk factors are not intended to be exhaustive.

Breast ironing/ flattening

Breast flattening, also known as breast ironing, is the process during which young pubescent girls’ breasts are ironed, massaged, flattened and/or pounded down over a period of time (ranging from a few weeks to years) in order for the breasts to disappear or delay the development of the breasts entirely. In some families, large stones, a hammer or spatula that have been heated over hot coals can be used to compress the breast tissue. Other families may opt to use an elastic belt or binder to press the breasts to prevent them from growing. Breast flattening usually starts with the first signs of puberty, it is usually carried out by female relatives.

It should also be acknowledged that some adolescent girls and boys may choose to bind their breast using constrictive material due to gender transformation or questioning their identity, and this may also cause health problems.

Forced Marriage

Forcing a person into marriage is a crime. A forced marriage is one entered into without the full and free consent of 1 or both parties and where violence, threats, or any other form of coercion is used to cause a person to enter into a marriage. Threats can be physical or emotional and psychological. It is also illegal to cause a child under the age of 18 to marry, even if violence, threats or coercion are not involved.

A lack of full and free consent can be where a person does not consent or where they cannot consent (if they have learning disabilities, for example). Nevertheless, some communities use religion and culture as a way to coerce a person into marriage.

Staff will receive training around forced marriage and the presenting symptoms. We are aware of the ‘1 chance’ rule, i.e. we may only have 1 chance to speak to the potential victim and only 1 chance to save them. If a member of staff suspects that a pupil is being forced into marriage, they will speak to the pupil about their concerns in a secure and private place. They will then report this to the DSL.

The DSL will:

- Speak to the pupil about the concerns in a secure and private place
- Activate the local safeguarding procedures and refer the case to the local authority’s designated officer
- Seek advice from the Forced Marriage Unit on 020 7008 0151 or fm@fco.gov.uk
- Refer the pupil to an education welfare officer, pastoral tutor, learning mentor, or school counsellor, as appropriate

Preventing radicalisation

- **Radicalisation** refers to the process of a person legitimising support for, or use of, terrorist violence
- Extremism is the promotion or advancement of an ideology based on violence, hatred or intolerance, that aims to:
 - Negate or destroy the fundamental rights and freedoms of others; or
 - Undermine, overturn or replace the UK's system of liberal parliamentary democracy and democratic rights; or
 - Intentionally create a permissive environment for others to achieve the results outlined in either of the above points
- **Terrorism** is an action that:
 - Endangers or causes serious violence to a person/people;
 - Causes serious damage to property; or
 - Seriously interferes or disrupts an electronic system

The use or threat of terrorism must be designed to influence the government or to intimidate the public and is made for the purpose of advancing a political, religious or ideological cause.

- Schools have a duty to prevent children from becoming involved with or supporting terrorism.
- The DSL will undertake Prevent awareness training and make sure that staff have access to appropriate training to equip them to identify children at risk.
- We will assess the risk of children in our school from becoming involved with or supporting terrorism.
- This assessment will be based on an understanding of the potential risk in our local area, in collaboration with our local safeguarding partners and local police force.
- We will ensure that suitable internet filtering is in place, and equip our pupils to stay safe online at school and at home.
- There is no single way of identifying an individual who is likely to be susceptible to radicalisation into terrorism. Radicalisation can occur quickly or over a long period.
- Staff will be alert to changes in pupils' behaviour.

The government website [Educate Against Hate](#) and charity [NSPCC](#) say that signs that a pupil is being radicalised can include:

- Refusal to engage with, or becoming abusive to, peers who are different from themselves
- Becoming susceptible to conspiracy theories and feelings of persecution
- Changes in friendship groups and appearance
- Rejecting activities they used to enjoy
- Converting to a new religion
- Isolating themselves from family and friends
- Talking as if from a scripted speech
- An unwillingness or inability to discuss their views
- A sudden disrespectful attitude towards others
- Increased levels of anger
- Increased secretiveness, especially around internet use
- Expressions of sympathy for extremist ideologies and groups, or justification of their actions
- Accessing extremist material online, including on Facebook or Twitter
- Possessing extremist literature

- Being in contact with extremist recruiters and joining, or seeking to join, extremist organisations

Children who are at risk of radicalisation may have low self-esteem, or be victims of bullying or discrimination. It is important to note that these signs can also be part of normal teenage behaviour – staff should have confidence in their instincts and seek advice if something feels wrong.

If staff are concerned about a pupil, they will follow our procedures as set out in 7.5 of this policy including discussing their concerns with the DSL.

Staff should always take action if they are worried.

Sexual violence and sexual harassment between children in schools

Sexual violence and sexual harassment can occur:

- Between 2 children of any age and sex
- Through a group of children sexually assaulting or sexually harassing a single child or group of children
- Online and face to face (both physically and verbally)

Sexual violence and sexual harassment exist on a continuum and may overlap.

Children who are victims of sexual violence and sexual harassment will likely find the experience stressful and distressing. This will, in all likelihood, adversely affect their educational attainment and will be exacerbated if the alleged perpetrator(s) attends the same school.

If a victim reports an incident, it is essential that staff make sure they are reassured that they are being taken seriously and that they will be supported and kept safe. A victim should never be given the impression that they are creating a problem by reporting sexual violence or sexual harassment. Nor should a victim ever be made to feel ashamed for making a report.

When supporting victims, staff will:

- Reassure victims that the law on child-on-child abuse is there to protect them, not criminalise them
- Regularly review decisions and actions, and update policies with lessons learnt
- Look out for potential patterns of concerning, problematic or inappropriate behaviour, and decide on a course of action where we identify any patterns
- Consider if there are wider cultural issues within the school that enabled inappropriate behaviour to occur and whether revising policies and/or providing extra staff training could minimise the risk of it happening again
- Remain alert to the possible challenges of detecting signs that a child has experienced sexual violence, and show sensitivity to their needs

Some groups are potentially more at risk. Evidence shows that girls, children with SEN and/or disabilities, and lesbian, gay, bisexual and gender questioning pupils (LGBTQ+) children are at greater risk.

Staff should be aware of the importance of:

- Challenging inappropriate behaviours
- Making clear that sexual violence and sexual harassment is not acceptable, will never be tolerated and is not an inevitable part of growing up
- Challenging physical behaviours (potentially criminal in nature), such as grabbing bottoms, breasts and genitalia, pulling down trousers, flicking bras and lifting up skirts. Dismissing or tolerating such behaviours risks normalising them

If staff have any concerns about sexual violence or sexual harassment, or a child makes a report to them, they will follow the procedures set out in section 7 of this policy, as appropriate. In particular, section 7.8 and 7.9 set out more detail about our school's approach to this type of abuse.

Serious violence

Indicators which may signal that a child is at risk from, or involved with, serious violent crime may include:

- Increased absence from school
- Change in friendships or relationships with older individuals or groups
- Significant decline in performance
- Signs of self-harm or a significant change in wellbeing
- Signs of assault or unexplained injuries
- Unexplained gifts or new possessions (this could indicate that the child has been approached by, or is involved with, individuals associated with criminal networks or gangs and may be at risk of criminal exploitation (see above))

Risk factors which increase the likelihood of involvement in serious violence include:

- Being male
- Having been frequently absent or permanently excluded from school
- Having experienced child maltreatment
- Having been involved in offending, such as theft or robbery

Staff will be aware of these indicators and risk factors. If a member of staff has a concern about a pupil being involved in, or at risk of, serious violence, they will report this to the DSL.

Checking the identity and suitability of visitors

All visitors will be required to verify their identity to the satisfaction of staff and to leave their belongings, including their mobile phone(s), in a safe place during their visit.

If the visitor is unknown to the setting, we will check their credentials and reason for visiting before allowing them to enter the setting. Visitors should be ready to produce identification.

Visitors are expected to sign the visitors' book and wear a visitor's badge. Visitors to the school who are visiting for a professional purpose, such as educational psychologists and school improvement officers, will be asked to show photo ID and:

- Will be asked to show their DBS certificate, which will be checked alongside their photo ID; or
- The organisation sending the professional, such as the LA or educational psychology service, will provide prior
- written confirmation that an enhanced DBS check with barred list information has been carried out.

All other visitors, including visiting speakers, will be accompanied by a member of staff at all times. We will not invite into the school any speaker who is known to disseminate extremist views, and will carry out appropriate checks to ensure that any individual or organisation using school facilities is not seeking to disseminate extremist views or radicalise pupils or staff.

Missing pupils

Our procedures are designed to ensure that a missing child is found and returned to effective supervision as soon as possible.

The use of 'reasonable force' in schools

The term 'reasonable force' covers the broad range of actions used by staff that involve a degree of physical contact to control or restrain children. 'Reasonable' in these circumstances means 'using no more force than is needed'. The use of force may involve either passive physical contact, such as standing between pupils or blocking a pupil's path, or active physical contact such as leading a pupil by the arm out of the classroom.

Our schools allow staff to use reasonable force to safeguard children and young people, which can include guiding a child to safety by the arm, to more extreme circumstances such as breaking up a fight or where a young person needs to be restrained to prevent violence or injury.

Our school does not adopt a 'no contact' policy, our staff can make appropriate physical contact that fully supports and protects our pupils and staff. The decision on whether or not to use reasonable force to control or restrain a pupil is down to the professional judgement of the staff concerned and will always depend on individual circumstances. Any use of 'reasonable force' must be reported to parents every time it occurs, and be recorded by the school.

Our school considers the vulnerability of children with SEN or disabilities or with medical conditions, and our school will carefully and recognise the additional vulnerability of these groups.

Appendix 5: Safeguarding against Coercive Religious Conversion Teaching Resource

- A. Introduction
- B. Why might some people seek to convert others?
- C. How might conversion occur?
- D. Common suggestions or tactics that are often employed
- E. Why Celebrating or Sharing a Conversion Story Can Be a Conversion Tactic
- F. Case Studies

A. Introduction

As an adult everyone has the right to choose their own religious path or no path. In this discussion, you'll learn about some of the ways that religious conversions can happen — including times when people may try to influence others in ways that aren't fully honest or fair.

Converting to a different religion is not necessarily wrong in itself. However when it is undertaken in a way where there is a prior intent to convert with regard for your current belief, it is deemed coercive. Coercive behaviour is a pattern of actions intended to misguide or frighten someone else into changing what they currently do.

In the Sikh religion, it is believed that God has chosen the religious identity you are born into, and that you should try your best to learn about it and follow its teachings. Because of this, Sikhs usually don't encourage people to change religions but instead encourage others to become better at understanding their own first.

B. Why might some people seek to convert others?

In some religions, there is a belief by some that theirs is the only true way to find God and peace. **This belief means they do not accept or respect other religious paths.** In some religions, there is a belief that converting someone else is rewarded by going heaven.

Activity: what are your views on whether we should accept others as they are, or should we seek to convert them?

C. How might conversion occur?

It is usually a planned intention to convert someone else.

Often those who seek to convert, will have resources of rehearsed conversations, social media, and examples. The commonest tactic will be to share often false statements about your own religion.

1. Emotional or Vulnerable Moments

Conversion efforts often target people during:

- **Personal struggles**, loss, loneliness, or transition periods.
- **Encouraged by a 'boyfriend' or a 'girlfriend'** who suggests that you cannot be together unless you convert
- **Blackmailing** you to convert over something you should not have done or don't want your parents to know about?

2. Watch for Gradual Indoctrination

Changes are often introduced slowly:

- You might be invited to learn more about another religion from a person from that religion.
- You might be invited with great love, and attention.
- You might be made to feel very special.
- You might be invited to watch certain types of social media teaching you about the true path of that religion
- You might be invited to talks, or events of another religion
- Over time, certain ideas may be repeated or emphasised leaving you feeling worried (e.g. your only way to God, or you are going to hell)

3. Language of Truth or Absolutes

When you are being persuaded to convert, watch out for statements like:

- "This is the only true way."
- "Everything else is false or incomplete."

- “The information about your religion is wrong, or a lie.”
- “There is no evidence or proof of the teachings of your own religion”
- “If you really knew the truth, you’d convert.”

These kinds of ideas are often part of persuasive efforts to shift beliefs.

4. False statements about your own religion

Often the person who is trying to convert will talk more about your religion as a false religion, as something that cannot take you forward spiritually. Most notably He/she will not ask you to find out more information about your own religion from someone who practices your religion.

5. Pressure to Recite or Affirm Beliefs

Be cautious if:

- You’re asked to say or repeat certain religious phrases or declarations. Even if it feels symbolic or light-hearted in the moment, it is taken very seriously by those who are converting you.
- You’re encouraged to dress or act in specific way before you’ve fully understood or agreed with the beliefs.

6. New Social Circle Pressure

Be cautious if:

- If you're being asked to slowly distance from your family, your old support or friend network
- If dissenting views are discouraged, or others outside the faith are viewed as “lost” or misguided.

7. Discouraging Independent Thought

Be cautious if:

- If you’re told not to read certain things, or only to trust specific religious sources.
- If you are discouraged to speak to someone of your own faith

D. Common suggestions or tactics that are often employed:

1. Absolute Truth Claims

Implied message: “Our religion is the only truth — all others are false or incomplete.”

Examples:

- “Only our holy book is the word of God.”
- “We are the only ones who know the real path to salvation or enlightenment.”
- “If you don’t follow our religion, you’re lost/confused/wrong. You will not be saved; You will go to hell”

Tip for pupils: Watch out for binary thinking — if a message frames it as “us vs. them,”

2. Exclusivity of Heaven or Salvation

Implied message: “Only our followers will be saved/honoured by God.”

Examples:

- “You need to join us or you won’t be saved.”
- “Our way is the only one that leads to paradise/heaven/moksha.”

Tip for pupils: Ask, *does this idea allow room for other people’s beliefs to also be meaningful?*

3. Moral or Cultural Superiority

Implied message: “Our religion makes people better or purer.”

Examples:

- “Look how disciplined, peaceful, or clean our people are.”
- “Other religions lead to violence or confusion — ours teaches only love and peace.”
- “Our community is more successful or blessed because of our faith.”

Tip for pupils: Be cautious of stereotypes or generalisations about whole religions or groups.

4. Framing Other Religions as Corrupt or Misguided

Implied message: “Other religions used to be okay, but they’ve lost their way.”

Examples:

- “Their book has been changed — ours is the original truth.”
- “That religion is based on myths or misunderstandings.”
- “We respect them, but they don’t really know the full truth.”

Tip for pupils: Respectful curiosity is different from messages that quietly dismiss or talk down other traditions.

5. Emotional Manipulation

Implied message: “You’re not good enough as you are — you need our religion to be accepted.”

Examples:

- “Don’t you want to be part of the real family of God?”
- “You’ll never truly feel peace until you join us.”
- “Without faith in our way, your life will always be missing something.”

Tip for pupils: Real belonging doesn’t require changing who you are under pressure.

E. Why Celebrating or Sharing a Conversion Story Can Be a Conversion Tactic

Even when it’s framed as a personal testimony or positive story, **sharing religious conversion stories** often does more than just inform — it can **influence**. Here’s why:

1. Emotional Impact

Conversion stories are powerful emotional narratives.

They often follow a “before and after” format:

- *Before:* Confused, lost, unhappy
- *After:* Peaceful, found, joyful (after accepting a new faith)

This plays on the audience’s emotions — **if someone is struggling**, they may start to wonder if converting will fix their problems too.

Discuss:

“How does hearing about someone else’s transformation make us think about our own lives?”

2. Social Proof

“If it worked for them, maybe it will work for me.”

When a conversion story is celebrated — especially if the person is admired, successful, or relatable — it sends the message:

- *“This religion has something special — look how it helped them!”*

This can create **peer pressure**, even indirectly.

3. Teaching by Example

If someone is always lifted up as a role model because they converted, it subtly says:

- *“This is what a smart, brave, or spiritually aware person does.”*

This positions conversion as a **goal to admire**, not just a personal choice.

4. Implied Superiority

Many stories **contrast religions**, even without naming them:

- *“I was in the wrong faith until I found the truth.”*
- *“Now I understand what God really wants.”*

This creates a **hierarchy of religions**, where the convert’s “new” faith is seen as better.

5. Used Repetitively in Conversion Settings

In religious outreach efforts (like missions, talks, or videos), **conversion stories are often repeated** to:

- Create an atmosphere of excitement and transformation
- Encourage the listener to imagine *their own* story starting the same way

F. Key Classroom Takeaway:

It’s okay to share personal stories, but pupils should ask:

- *“Why is this being shared right now?”*
- *“What message is it sending me — and how do I feel about it?”*
- *“Is this about the person’s journey... or am I being nudged toward the same path?”*

Your Consent Matters

Ultimately, **nobody should pressure or manipulate** you. Faith — if it happens — should be an informed, personal decision without manipulation by others or in a vulnerable situation.

How to raise concerns if you or someone you know is going through any similar situation?

- Report any incidences that you witness from any other pupils or adult.
- Please talk to a member of staff, your pastoral lead, or headteacher. You will be provided confidential support and guidance from someone who is trained to provide you support. This person will be able to answer questions that arise about religious theology

G. Case studies:

I. Case Study 1 – Age 9 (Christian child)

Background: A Christian boy in Year 4 at primary school.

What happened:

- Muslim classmates told him “only Muslims go to heaven.”
- They refused to play with him unless he recited certain phrases.
- He began to feel that his own prayers “did not work” unless he converted.

Safeguarding Point:

This shows peer pressure and exclusivity claims being used to make a child feel their own faith is invalid.

Case Study 2 – Age 9 (Sikh child)

Background: A Sikh girl in Year 4.

What happened:

- A group of Christian (JW) pupils said they could only be her friends if she came to their lunchtime prayer meeting.
- She was pressured to be baptised so she could belong.

Safeguarding Point:

This is an example of social exclusion being used to coerce conversion.

Case Study 3 – Age 12 (Sikh child)

Background: A Sikh girl in Year 7.

What happened:

- Older pupils made her recite verses from another faith and told her she had “changed religion” as a result.
- She felt frightened and confused because she never gave consent.

Safeguarding Point:

This highlights false statements and manipulation.

Case Study 4 – Age 15 (Sikh child with SEN)

Background: A Sikh boy in secondary school with special educational needs.

What happened:

- Friends persuaded him to attend Friday prayers in another faith.
- He was told his Sikh practices were wrong.
- Over time, he was pressured to say a conversion prayer.

Safeguarding Point:

This demonstrates gradual indoctrination and targeting of vulnerability.

Case Study 5 – Age 13 (Hindu child)

Background: A Hindu girl in Year 8.

What happened:

- Christian peers repeatedly invited her to church youth groups and told her that Hindu gods were “fake.”
- She was told her family’s practices were “idol worship” and that only Jesus could save her.
- She felt guilty and ashamed of her family traditions.

Safeguarding Point:

This illustrates framing another religion as corrupt and using guilt to pressure a child into conversion.